

District Profile

USD 409 Atchison Public Schools

Dr. Susan Myers, Superintendent

Table of Contents:

Demographics:

- County Profile
- Census Data - Geographic Comparison

District Profile

- Current Enrollment
- Enrollment Trends by Race, Grade, Lunch Status
- District Staffing / Trends in Certified Non-Certified Personnel
- Comparison to Selected Districts

Assessment Performance Index (API):

- Current Status / Designation by Building
- Building Trend Data

Reading Assessments

- Overview - Trends All Grades
- Score Detail - Trends by Grade
- Reading Scores by Group

Mathematics Assessments

- Overview - Trends All Grades
- Score Detail - Trends by Grade
- Math Scores by Group

Science Assessments

- Overview - Trends All Grades
- Score Detail - Trends by Grade
- Science Scores by Group

County Profile Information

Atchison County, Kansas

At the time of the US Census 2010, the population of Atchison county was approximately 16924. This represents a 0.9% change from the year 2000 as compared to a 11.8 % change in the state of Kansas. With a total number of 435 square miles in the county, the population density for the county is 39.1 people per square mile (Kansas state population density is 34.9 per square mile compared to 87.3 per square mile in the United States). According to projections collected by the US Census Bureau, the percentage change in total population from the year 2010 through 2030 is estimated at 4.6 for the county (11.8 percent change estimated in the state population).

The following table shows the change in racial composition of the county over the past 10 years:

	2000	2001	2002	2003	2004	2005	2006	2007	2008	2009	2010	% Change
White	15697	15726	15616	15603	15599	15465	15433	15325	15213	15242	15395	-2.0%
Black	1014	1023	1045	1052	1068	1077	1089	1106	1143	1154	853	-14.0%
Am Indian / Alaskan	222	226	232	241	243	251	244	243	256	259	93	-49.8%
Asian	68	68	68	65	68	68	75	75	74	80	70	2.5%
Hawaiian / Islander	13	13	14	14	14	13	15	14	13	15	8	-33.3%

***Source: Kansas Statistical Abstract 2011 "Population in Kansas, by Race and County"**

At the time of the 2000 Census, Atchison county had approximately 327 people reporting a Hispanic / Latino ethnicity residing in the county. This represented 1.94 percent of the county population as compared to 7 percent in the state for the same period. By the year 2010, the total number was 383 or 2.26 percent of the population, representing a change of 17.12 percent. For the same 10-year period, the state of Kansas had a 59.38 percent change in Hispanic / Latino population. Approximately 0.6 percent of the county population surveyed in 2010 reported being foreign-born and 2.1 percent of the population over 5 years of age reported speaking a language other than English in their homes.

According to the US Census, recent estimates (based on NAICS 2007 adjusted report) show that approximately 397 square miles of the county is dedicated to farming (91.27 %). The portion of the county considered to be rural as defined by the US Census Bureau (places of 2500 or more persons) is 98.7 percent of total acres with the remaining 1.3 percent being considered urban areas.

INDUSTRY: Civilian employed population 16 years and over - Percent

Agriculture, forestry, fishing and hunting, and mining	3.4	Transportation and warehousing, and utilities	5.4
Construction	7.9	Information	1.3
Educational services, and health care and social assistance	27.9	Finance and insurance, and real estate and rental and leasing	3.2
Wholesale Trade	2.4	Manufacturing	19.6
Retail Trade	7.5	Public Administration	5.8
Arts, entertainment, recreation, accommodation and food services	7.4	Professional, scientific, and management, and administrative and waste	3.5

US Census: Geographic Comparison

US Census: American Community Survey 5-Year Data 2006-2010 Atchison ATCHISON County Kansas USA

FAMILY INCOME:

Median Family Income	\$49,612	\$52,908	\$62,424	\$62,982
Mean Family Income	\$65,728	\$65,235	\$77,722	\$82,446
Percent of families with children in poverty	18.1	14.3	13.7	15.7
Percent of households with Public Asst income	4.3	3.4	2.3	2.5
Percent of households with Food Stamp benefits	16.9	13.4	7.2	9.3

EDUCATIONAL ATTAINMENT:

Population over 25 years old - percent

Less than 9th grade	5.1	4.1	4.2	6.2
9th to 12th grade - No Diploma	8.9	8.1	6.6	8.7
Total with No High School Diploma / GED	14	12.2	10.8	14.9
High School Diploma or Equivalency	38.1	43.6	28.9	29
Bachelor's Degree or More	13.6	13.3	19.3	17.6

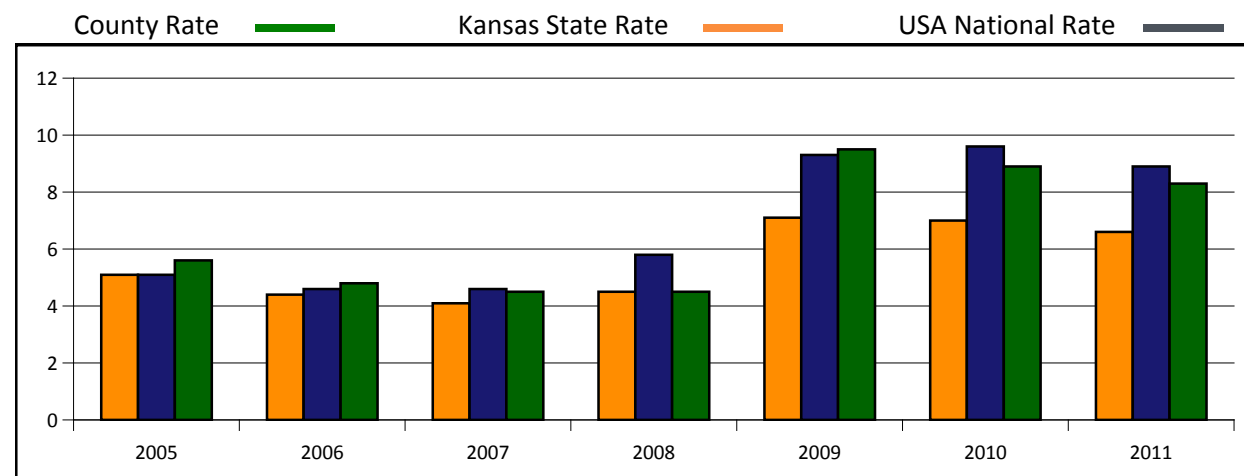
HOUSEHOLD COMPOSITION:

Percent of households that are families	61.1	66	66.3	66.8
Average family size	3.16	3.13	3.04	3.17
Married couple families (children under 18)	15.8	18.2	22	21.1
Single parent household- female only	11.3	7.8	6.6	7.3
Single parent household- male only	3.4	1.4	2.3	2.2

HOUSING DATA:

Year housing built - median age / years	54	52	41	37
Median value of owner-occupied homes	\$84,600	\$89,200	\$122,600	\$188,400
Vacancy rate of all housing units	12.7	10.8	9.9	12.2
Percent of housing units owner-occupied	56.8	66.4	69.4	66.6
Percent of housing units renter-occupied	43.2	33.6	30.6	33.4

UNEMPLOYMENT DATA:



Comparison to Other Cities in the County:

City	USD	Population	Ave Family Size	Median Family Income	Families in Poverty
Effingham	USD 377 Atchison Co Comm Schools	541	3.27	\$42,083	16.6
Atchison	USD 409 Atchison Public Schools	10949	3.16	\$49,612	18.1

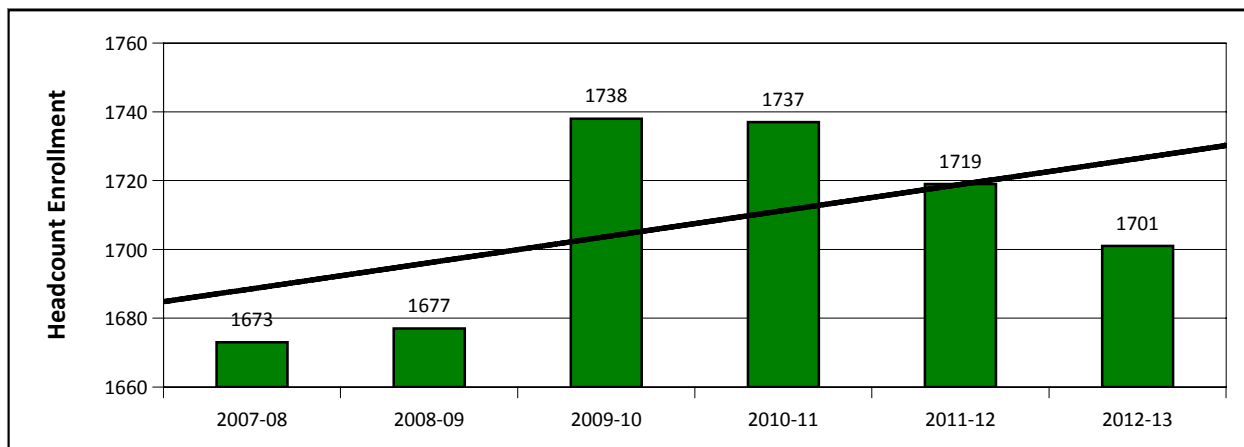
District Demographics

USD 409 is comprised of the following schools:

DISTRICT BUILDINGS:	City	Building Type	Grades Served	2012-13 Enrollment
ATCHISON ELEMENTARY SCHOOL	Atchison	Elementary School	PK-5	893
ATCHISON ALTERNATIVE SCHOOL	Atchison	Special School	1-12	48
ATCHISON MIDDLE SCHOOL	Atchison	Junior High School	6-8	339
ATCHISON HIGH SCHOOL	Atchison	High School	9-12	421

***SOURCE: KSDE School Finance Reports - Free Reduced Enrollment (USD Totals - Total Enrolled)**

DISTRICT ENROLLMENT TREND:



ENROLLMENT HISTORY BY RACE

The chart below details the change in enrollment and racial diversity of the district as a whole over the past five years. According to the data as reported by the KSDE School Finance website, total enrollment in the district has changed by 46 students since the 2007-08 school year. Enrollment by white students has changed by -31 students while enrollments by black students has had a net change of -70 students.

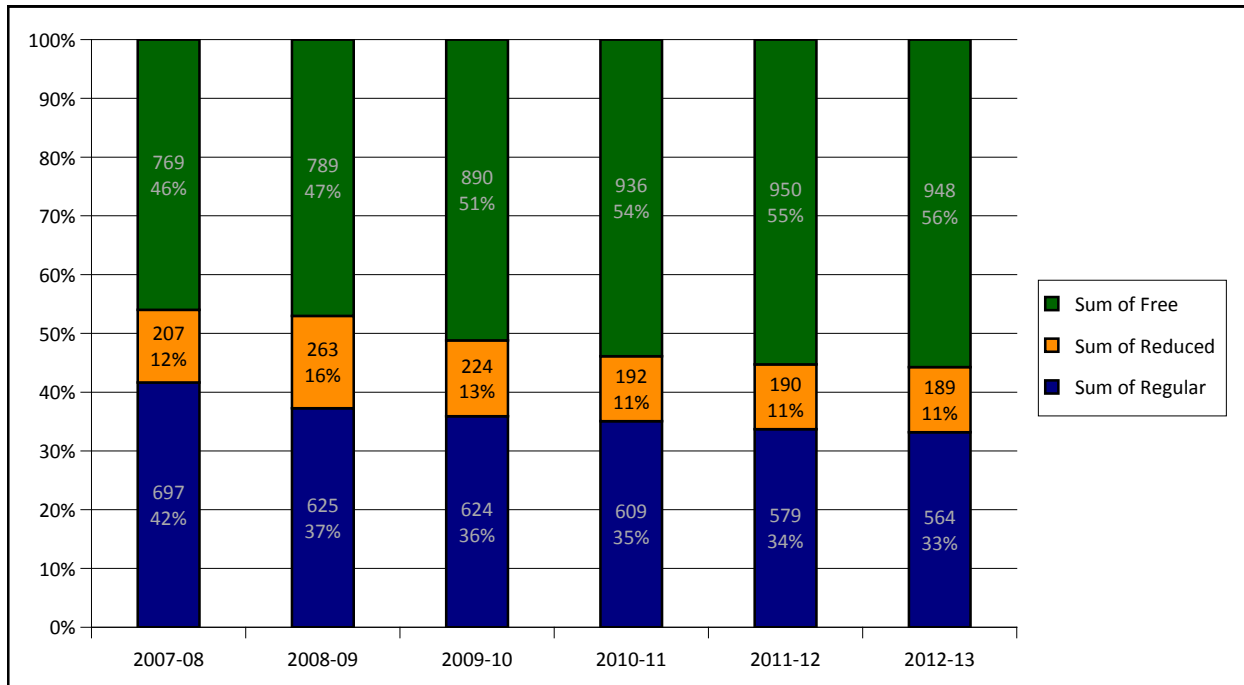
School Year	Total Enrolled	White	Black	Hispanic	Am Indian / Alaskan	Asian	Hawaiian / Islander	Multiple Races
2007-08	1673	1323	289	39	10	12	0	0
2008-09	1677	1345	266	42	12	12	0	0
2009-10	1743	1315	223	86	10	9	3	97
2010-11	1737	1299	220	83	12	14	3	106
2011-12	1719	1292	219	87	9	17	3	92

***SOURCE: KSDE K-12 School Reports - Enrollment by Grade, Race, Gender (Includes Pre-K Non-Graded Students)**

Economically Disadvantaged Students

DISTRICT HISTORY FREE REDUCED LUNCH ELIGIBILITY:

This graphic shows the changes in the percentage of students eligible for free lunch, reduced lunch, or no eligibility for the past four years.



CURRENT ELIGIBILITY BY BUILDING:

	Enrollment	Free Lunch	Reduced Lunch	Percent FRL
ATCHISON ELEMENTARY SCHOOL	889	530	86	69.3%
ATCHISON HIGH SCHOOL	445	200	63	59.1%
ATCHISON MIDDLE SCHOOL	342	185	37	64.9%
ATCHISON ALTERNATIVE SCHOOL	43	35	4	90.7%

District Personnel

Below is the status of USD 409 teachers for the 2010-11 school year. Data provided by special request from the KSDE Research & Evaluation help desk.

School	Subject	% Highly Qualified
ATCHISON ALTERNATIVE SCHOOL		
	History & Government	100.0
	English Language Arts	100.0
	Science	100.0
	Mathematics	100.0
	Fine Arts	100.0
	Elementary	100.0
ATCHISON ELEMENTARY SCHOOL		
	Elementary	100.0
	English Language Arts	100.0
	Fine Arts	100.0
ATCHISON HIGH SCHOOL		
	English Language Arts	100.0
	Fine Arts	100.0
	World Languages	100.0
	History & Government	100.0
	Mathematics	100.0
	Science	100.0
ATCHISON MIDDLE SCHOOL		
	History & Government	100.0
	English Language Arts	100.0
	Mathematics	100.0
	Science	100.0
	Fine Arts	100.0

CERTIFIED PERSONNEL:

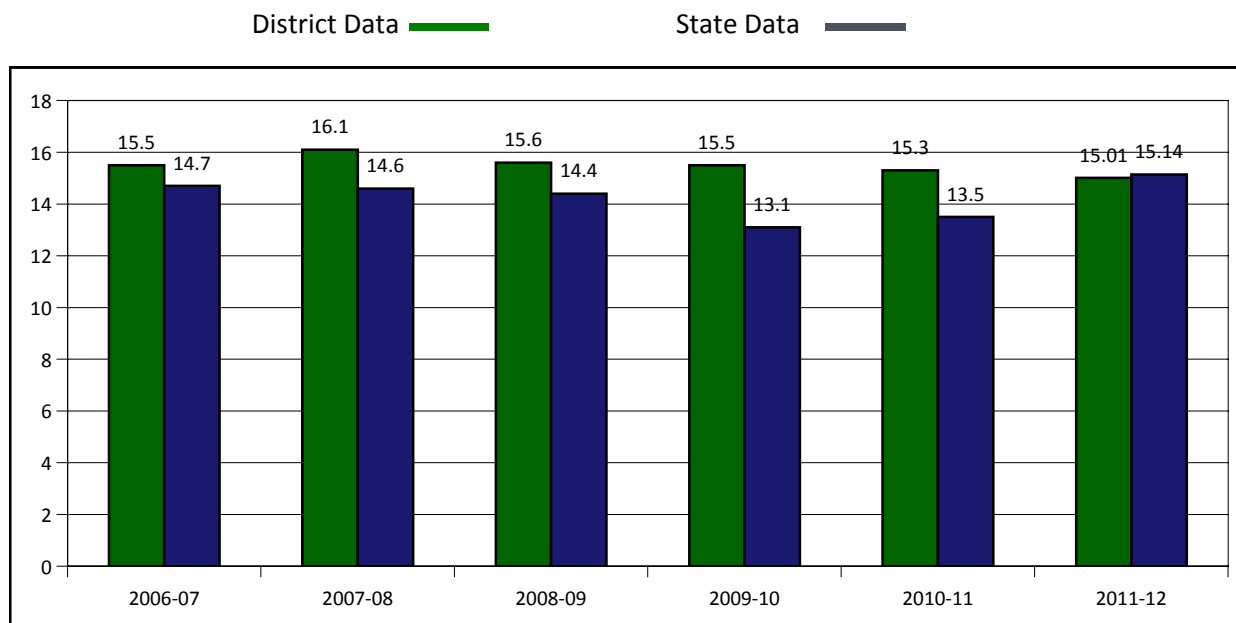
The following data was obtained via the KSDE website, School Finance Publications "Certified Personnel" 2011-12 reports and indicates the number of fully certified personnel in each category.

K-12 Teachers	Special Ed Teachers	Special Ed Director	Reading Teachers	Curriculum Specialists	Library Specialists
107.9	23	1	5	0	3

NON-CERTIFIED PERSONNEL:

Regular Ed Aides	Special Ed Paras	Technology Others	Technology Director	Library Aides
4.6	35.4	2.6	0.0	0.4

STUDENT / TEACHER RATIO



Summary of District Demographics Comparisons

The following districts were chosen for comparison based on a combination of approximate student enrollment and their relative proximity to your district.

COMPARISON DISTRICTS	District County	2011-12 Enrollment	Free Reduced Lunch	Student / Teacher Ratio	Assessed Valuation pr/Pupil
USD 320 Wamego	Pottawatomie	1,518	33.3	14	51,296
USD 409 Atchison Public Schools	Atchison	1,701	66.8	15.3	50,556
USD 435 Abilene	Dickinson	1,622	45.1	15.5	49,073
USD 473 Chapman	Dickinson	1,071	44.1	12.5	67,085

Accountability

On July 19, 2012, the U.S. Department of Education announced that it granted Kansas a waiver from requirements of the federal No Child Left Behind law. Under this waiver, schools and districts are no longer held to the “Adequate Yearly Progress” standard for bringing all students up to proficiency in reading and math by 2014.

Instead, they must comply with a set of standards based on what Kansas calls the “Assessment Performance Index,” or API, which takes into account multiple measures of student performance.

FLEXIBILITY WAIVER STATUS (IF ANY)

The table below displays any schools within the district that fall under the following three categories:

FOCUS SCHOOLS: Focus schools are identified by comparing the Assessment Performance Index (API) score of the lowest performing 30 percent of students within each Title I school to an established state benchmark. The Title I schools with the largest gap between the state benchmark and its lowest performing students are designated as focus schools.

PRIORITY SCHOOLS: The identification of Priority Schools is based on the “All Students” group. The state reading and mathematics assessment results for the most recent 4 years are combined in the Assessment Performance Index (API). The Title I schools are ranked based on API scores with the lowest 5% identified as Title I Priority Schools.

REWARD SCHOOLS: The identification of Reward Schools is also based on the “All Students” group reading and mathematics assessment results for the most recent 4 years. Those schools in the top 10% of all Title I schools are identified as Reward Schools.

SCHOOL	SCHOOL YEAR	BUILDING DESIGNATION
ATCHISON ALTERNATIVE SCHOOL	2012-13	NO DESIGNATION
ATCHISON ELEMENTARY SCHOOL	2012-13	NO DESIGNATION
ATCHISON HIGH SCHOOL	2012-13	NO DESIGNATION
ATCHISON MIDDLE SCHOOL	2012-13	NO DESIGNATION

BUILDING-LEVEL AYP DATA: 2011-12

The table(s) below depict whether AYP goals were met for each student groups in each of the subjects reviewed.

KEY: Y = AYP Met C = Met Conditionally N = AYP Not Met N/A = Does not apply

	READING		MATHEMATICS		OTHER		BLDG AYP Met
	Performance AYP Met	Participation AYP Met	Performance AYP Met	Participation AYP Met	Graduation Rate	Attendance Rate	
ATCHISON ALTERNATIVE SCHOOL							
All Students	Y	Y	Y	Y	Y		Yr
ATCHISON ELEMENTARY SCHOOL							
African-Americans	Y	Y	Y	Y			
All Students	Y	Y	Y	Y	N/A	Y	Y
Free & Reduced Lunch	Y	Y	Y	Y			
Students with Disabilities	Y	Y	Y	Y			
White	Y	Y	Y	Y			
ATCHISON HIGH SCHOOL							
All Students	Y	Y	Y	Y		N/A	Y
Free & Reduced Lunch	Y	Y	Y	Y			
White	Y	Y	Y	Y			
ATCHISON MIDDLE SCHOOL							
African-Americans	Y	Y	Y	Y			
All Students	Y	Y	Y	Y		Y	Y
Free & Reduced Lunch	Y	Y	Y	Y			
Students with Disabilities	Y	Y	Y	Y			
White	Y	Y	Y	Y			

District Reading Assessments

READING PERFORMANCE BY YEAR:

In order to meet the requirements of adequate yearly progress, every student group must meet or exceed annual targets in reading while maintaining a participation rate of 95% or more. The chart below details the trend of "All students" meeting or exceeding standards for the past five years by grade.

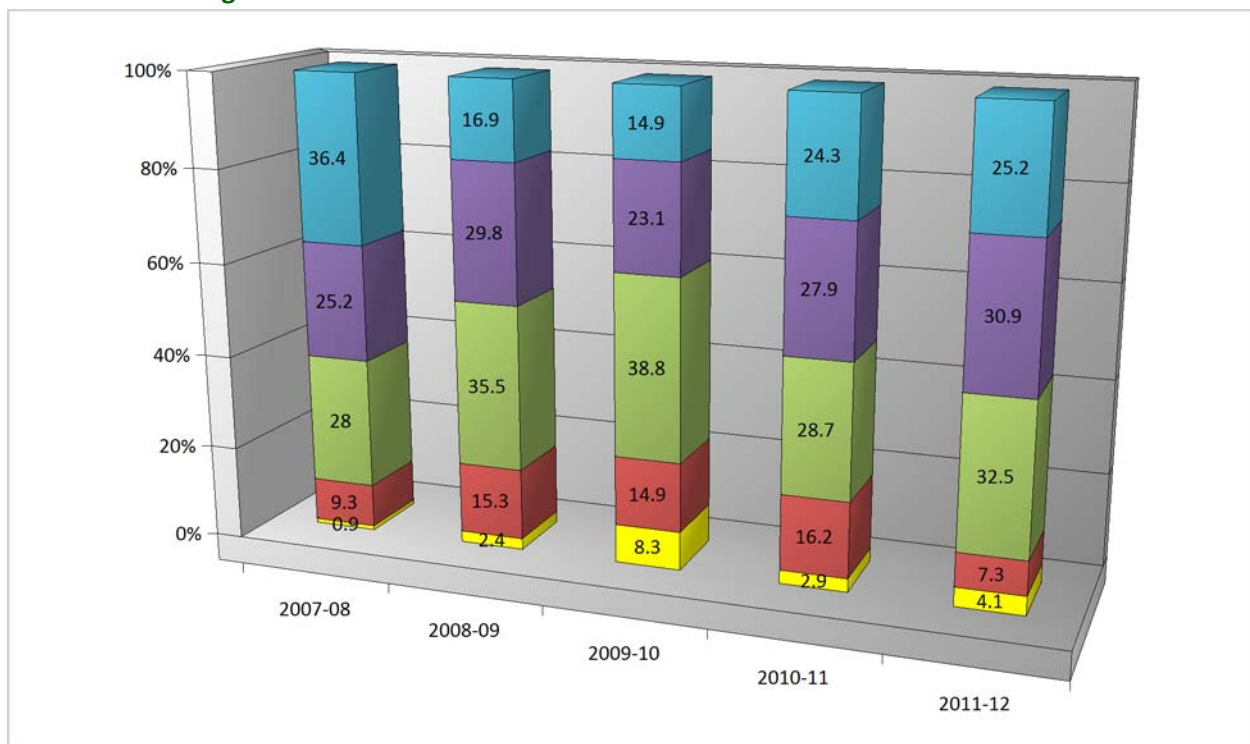
	3rd	4th	5th	6th	7th	8th	HS
2007-08	89.7	83.3	79.8	88.9	77.9	69.6	85.4
2008-09	82.3	77.1	84.8	86.9	90.9	79.8	86.9
2009-10	76.9	81	76.9	85.6	83.9	78.3	87.6
2010-11	80.9	70.1	84.7	88.1	86.9	93.2	79.8
2011-12	88.6	82.7	81.1	91.3	86.1	91.5	79.8

READING SCORES BY GRADE:

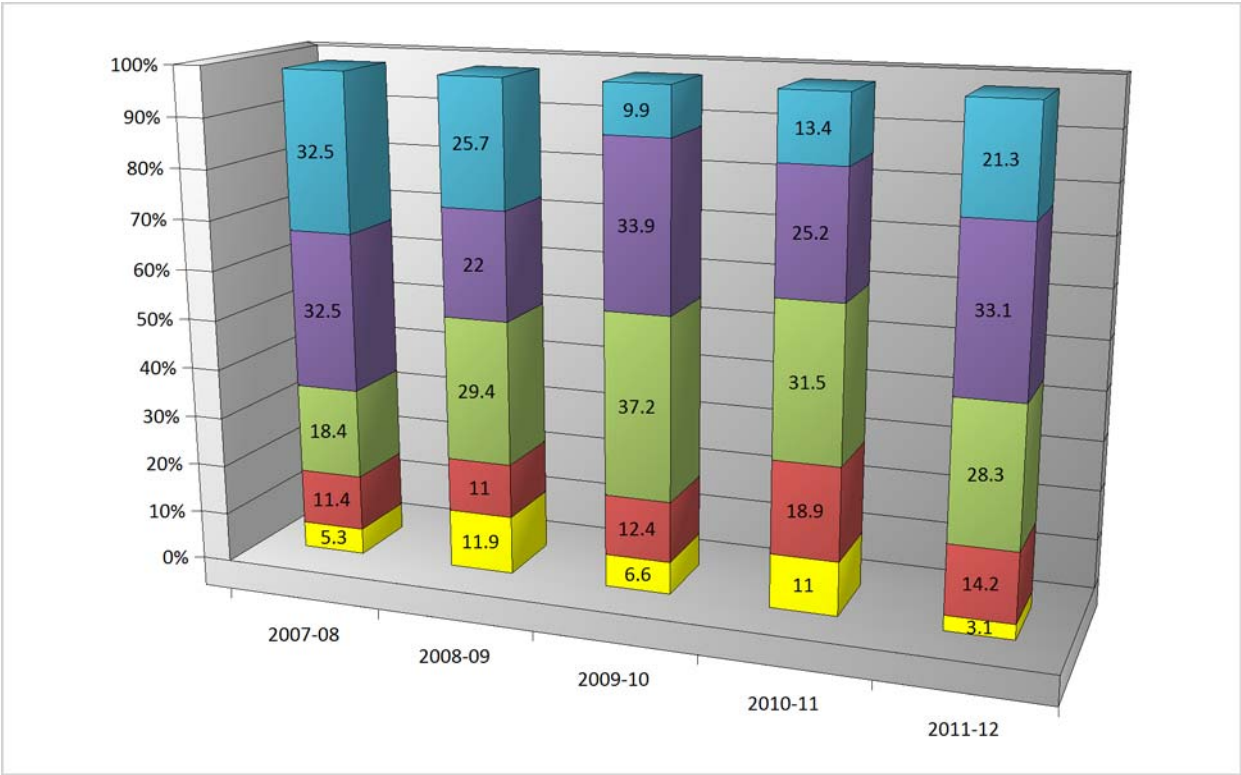
The following graphs show the change in percentage scoring within each of the following ranges for each of the past years indicated.



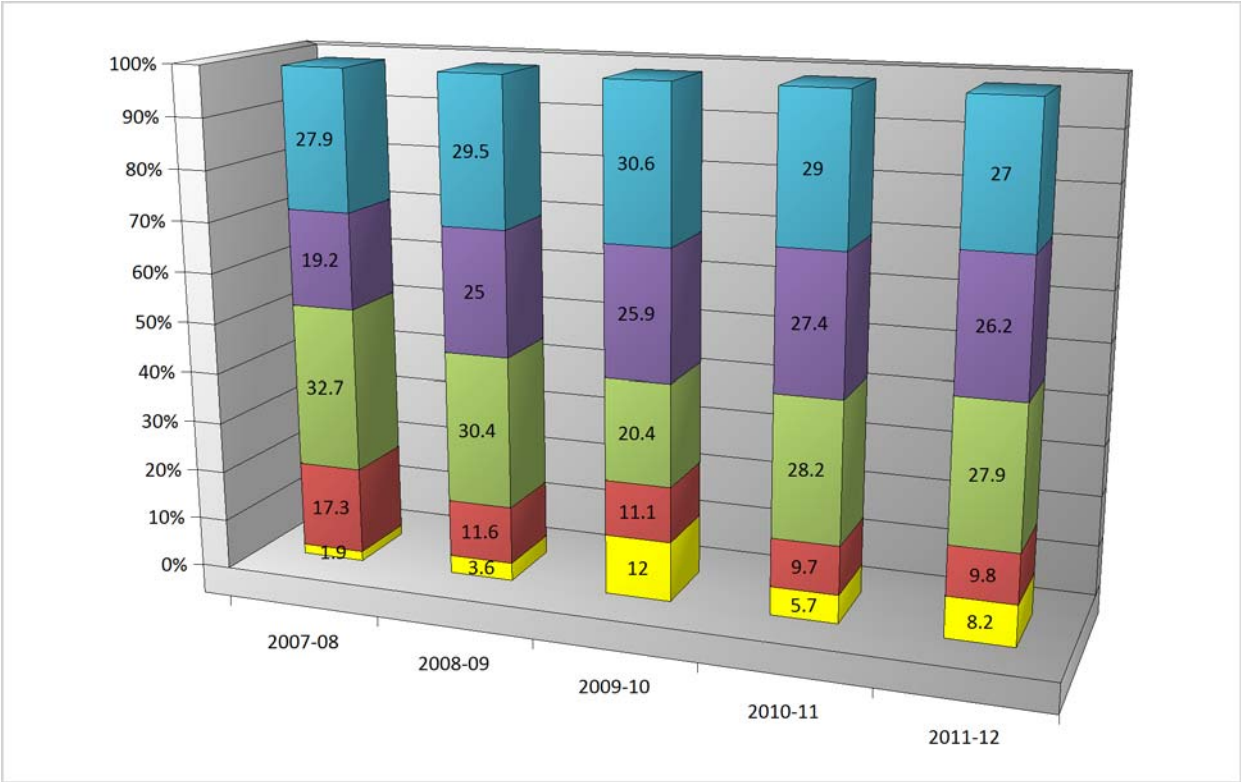
3rd Grade Reading:



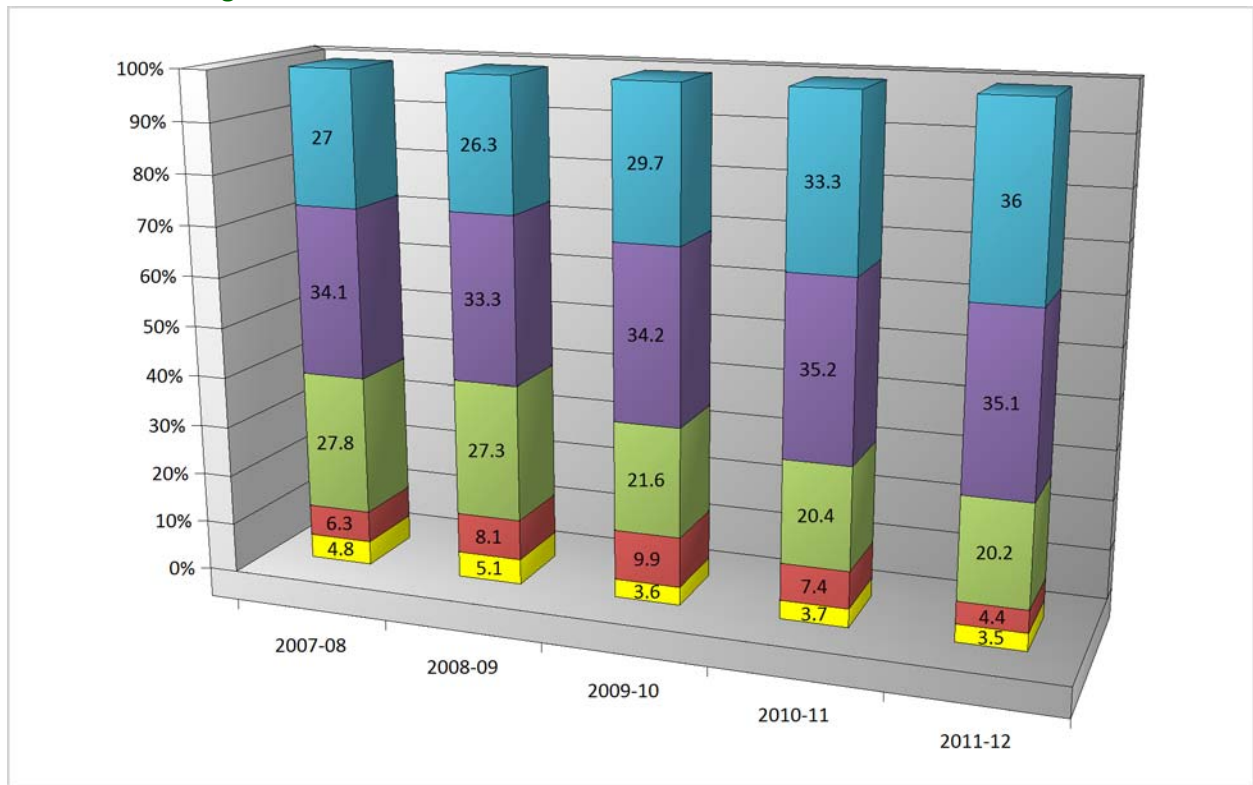
4th Grade Reading:



5th Grade Reading:



6th Grade Reading:

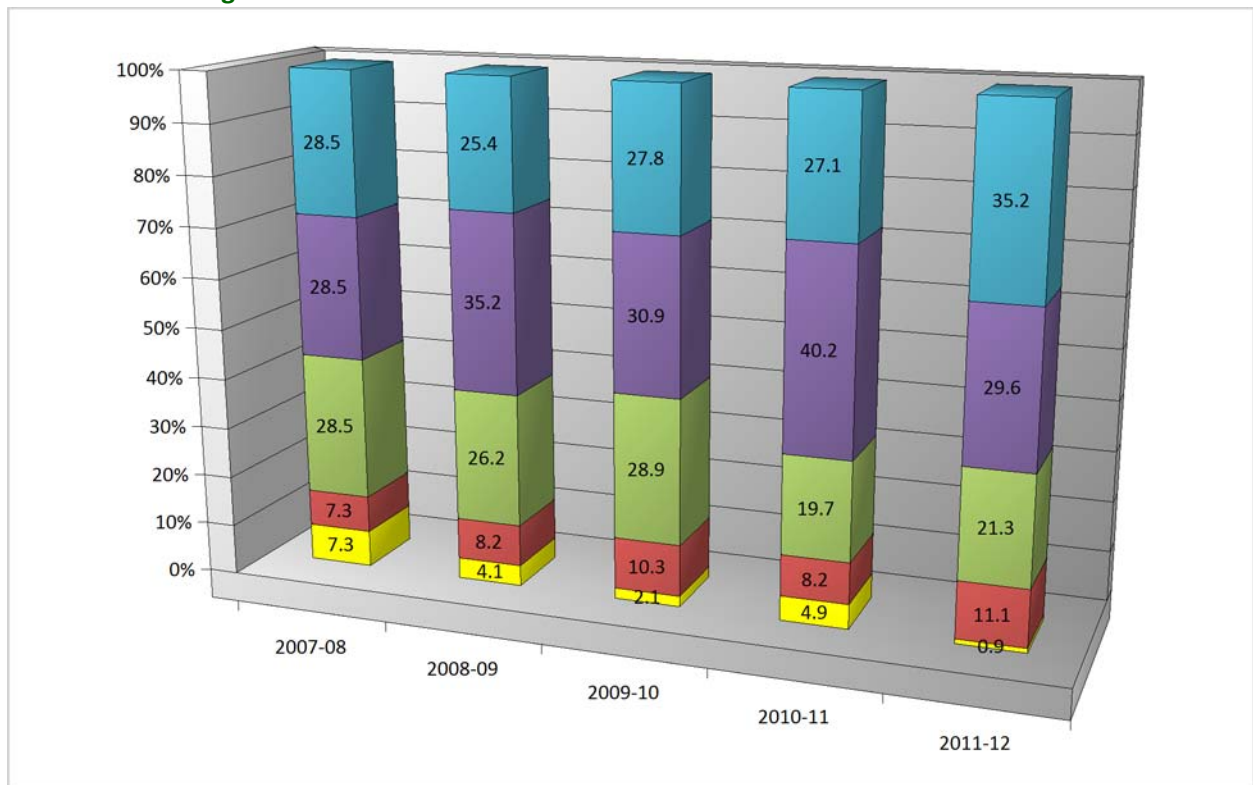


Academic Warning ■
 Approaches Standard ■

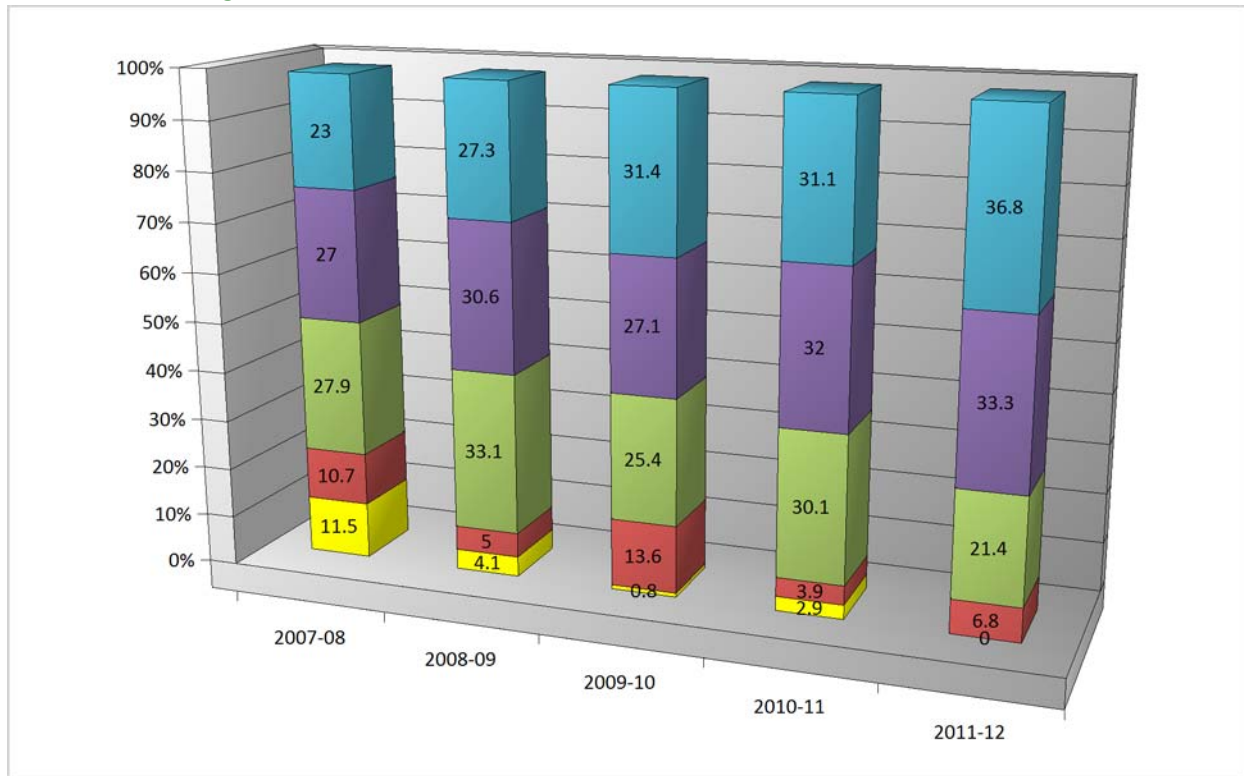
Meets Standard ■

Exceeds Standard ■
 Exemplary ■

7th Grade Reading:

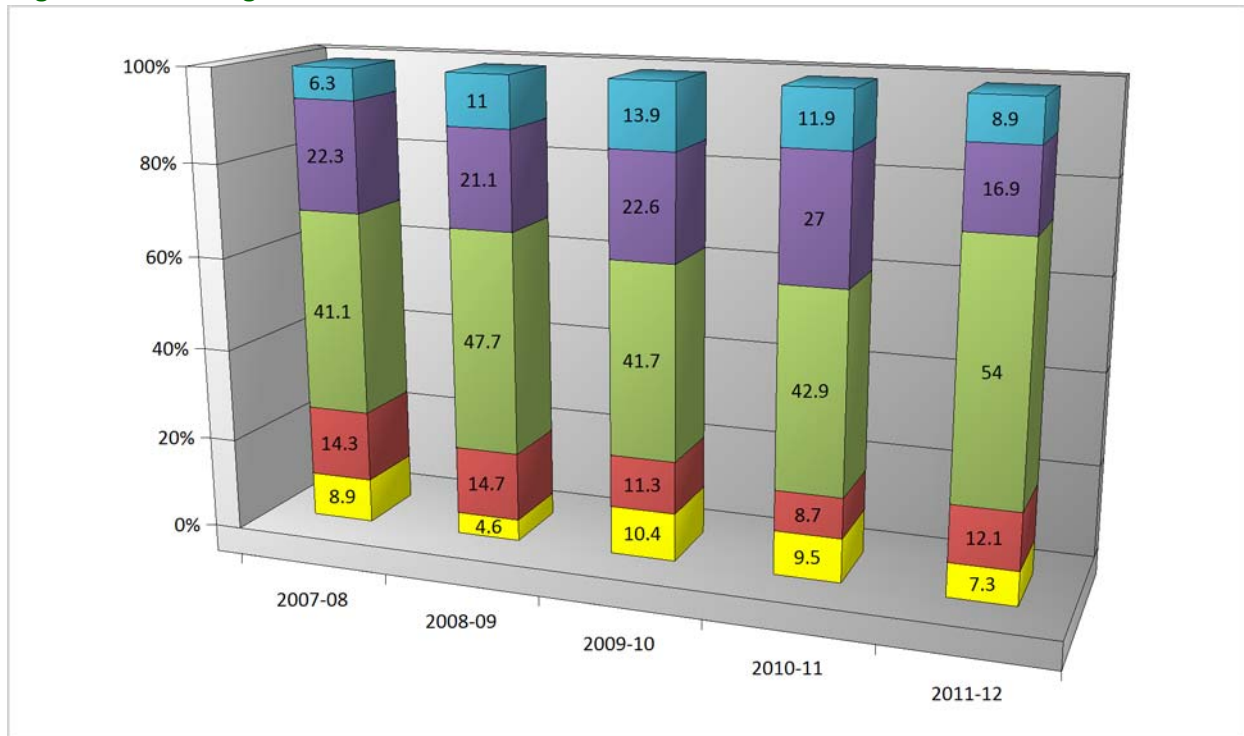


8th Grade Reading:



Academic Warning ■ Meets Standard ■ Exceeds Standard ■
 Approaches Standard ■ Exemplary ■

High School Reading:



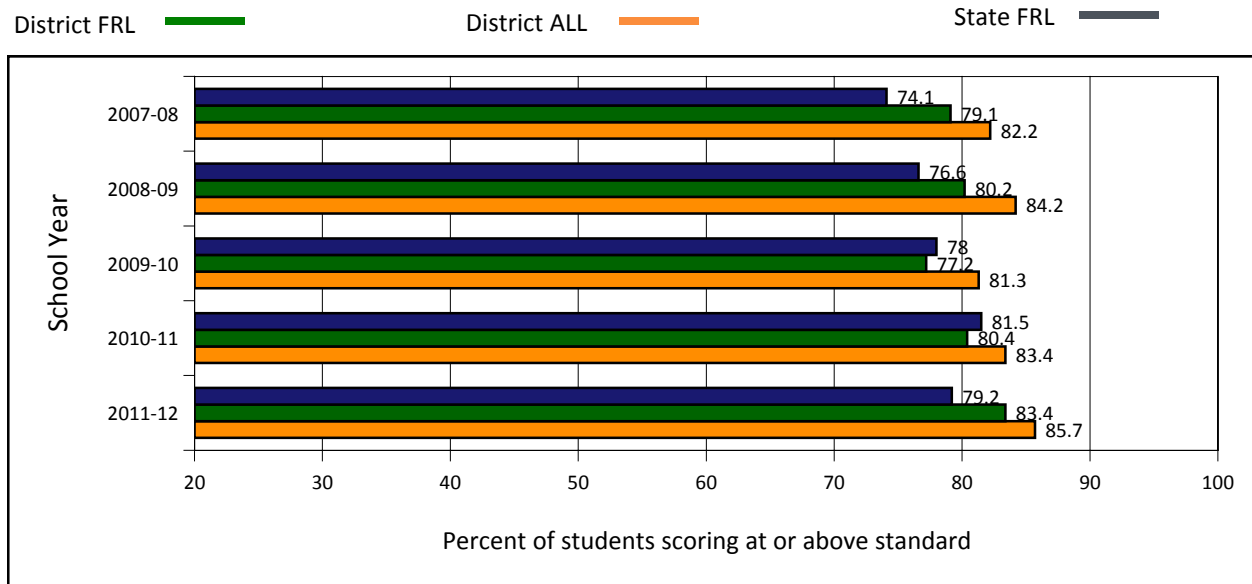
Reading Scores - Disaggregated Groups

Traditionally, students who receive free or reduced lunch or special education support score at lower levels on state assessments than those who are not eligible for these special services. The graphs below compare those scoring at or above standard who are receiving additional support to the "All Students" category as data only for those not receiving services is not available.

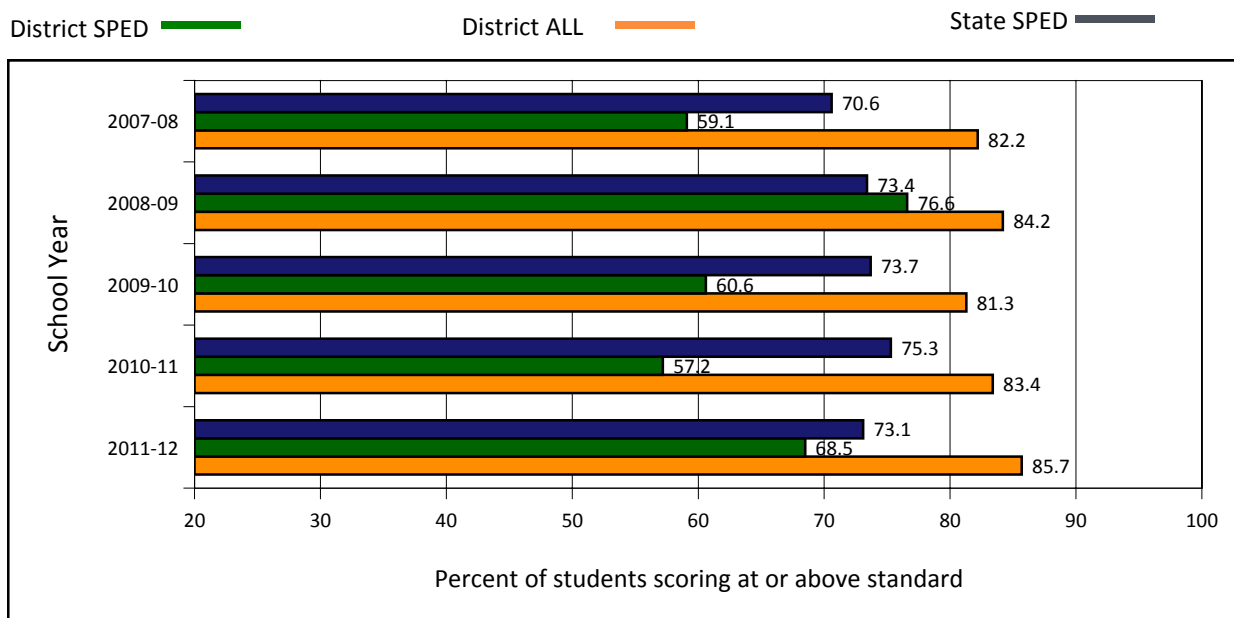
(Source: Special Request KSDE - USD Assess by Grade / Group)

NOTE: The assessment results presented include ALL STUDENTS TESTED with the regular / non-modified assessment only, not just those students enrolled on or before September 20. Slight differences between percentages reported for AYP are to be expected as the AYP calculation, as well as the Standard of Excellence calculation, is based upon the results of those students who were enrolled by September 20.

ECONOMICALLY DISADVANTAGED STUDENTS:



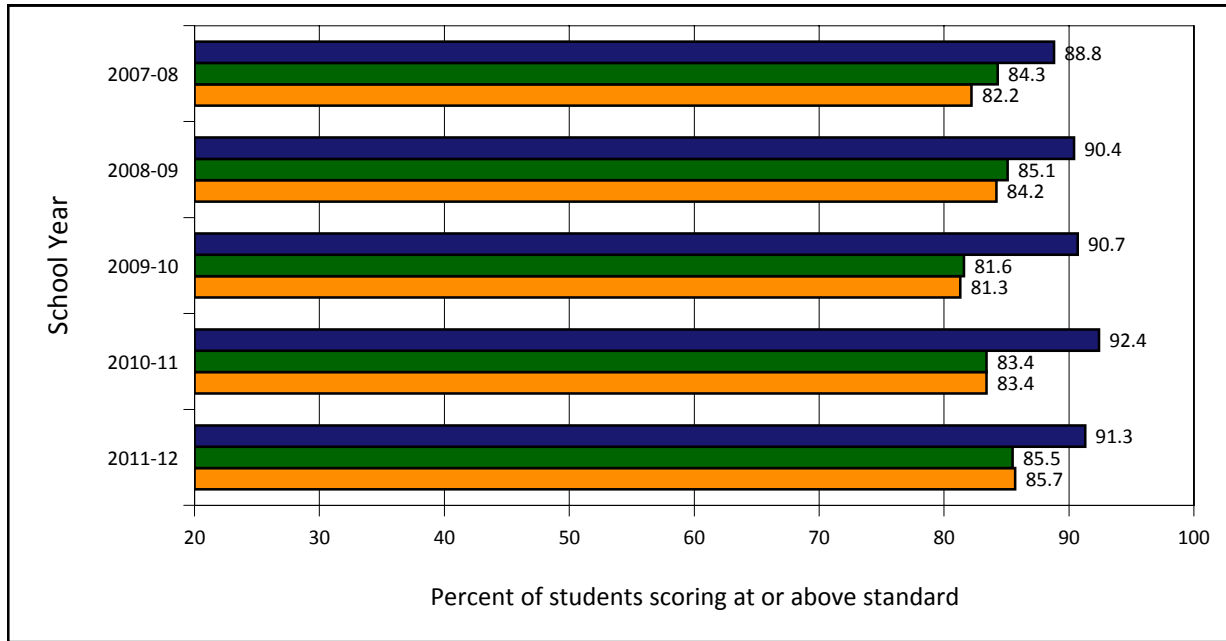
STUDENTS WITH DISABILITIES:



NOTE: Groups of less than 10 students are not reported.

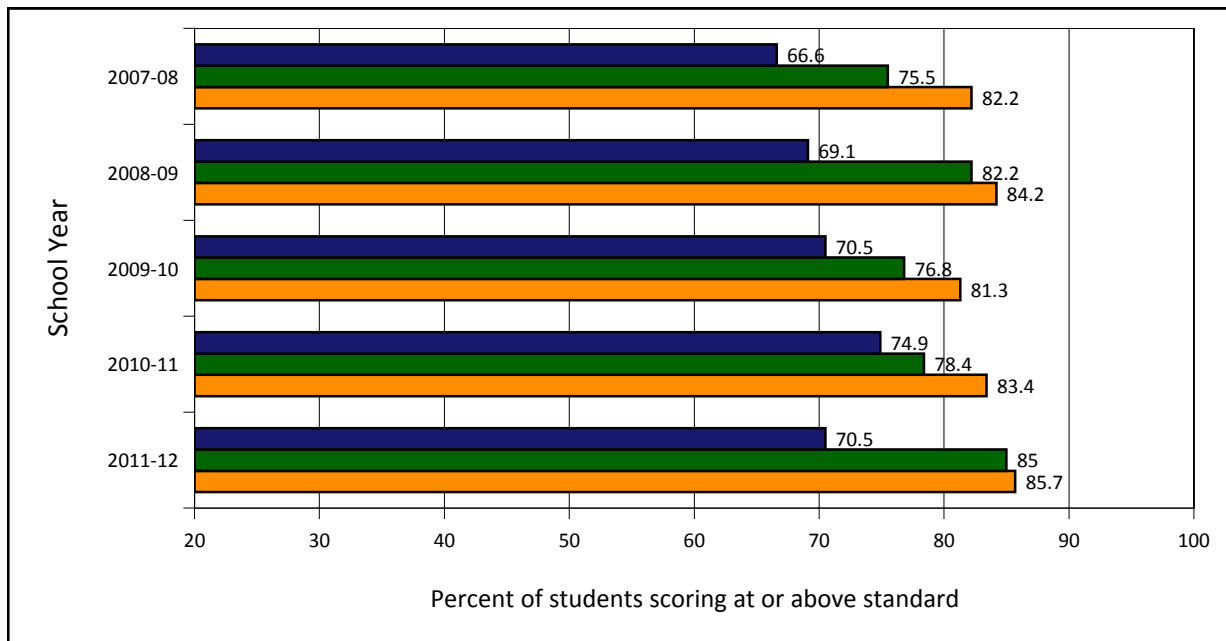
DISSAGGREGATED GROUP: White Students

District Disagg Group █ District ALL Students █ State Disagg Group █



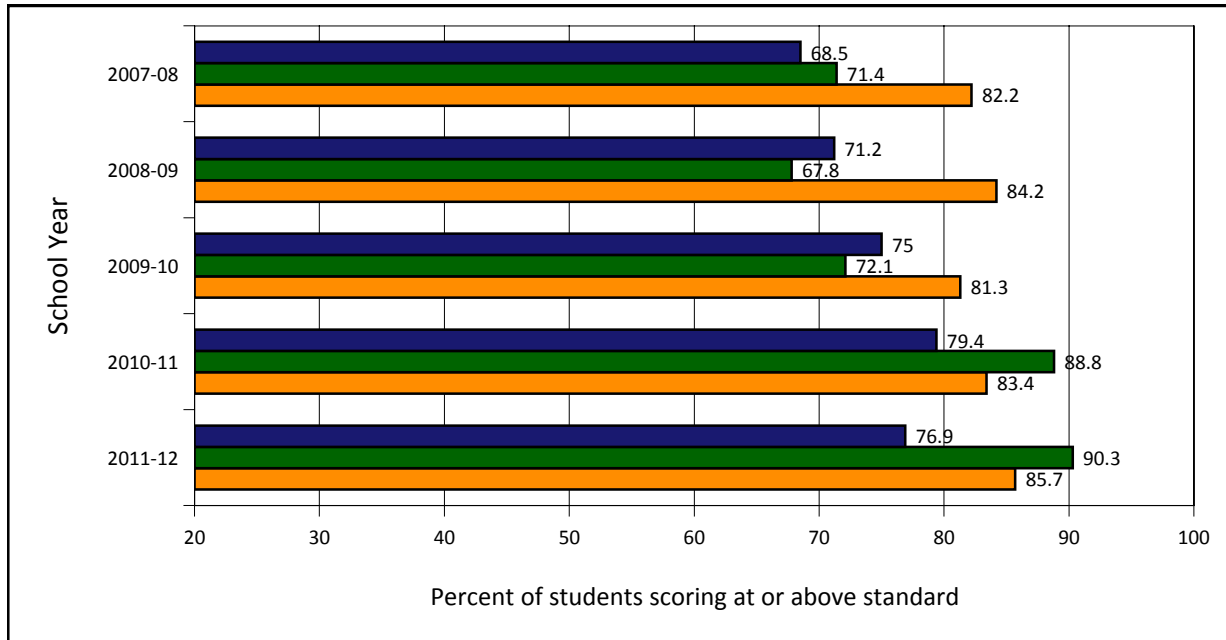
DISSAGGREGATED GROUP: African-Americans Students

District Disagg Group █ District ALL Students █ State Disagg Group █



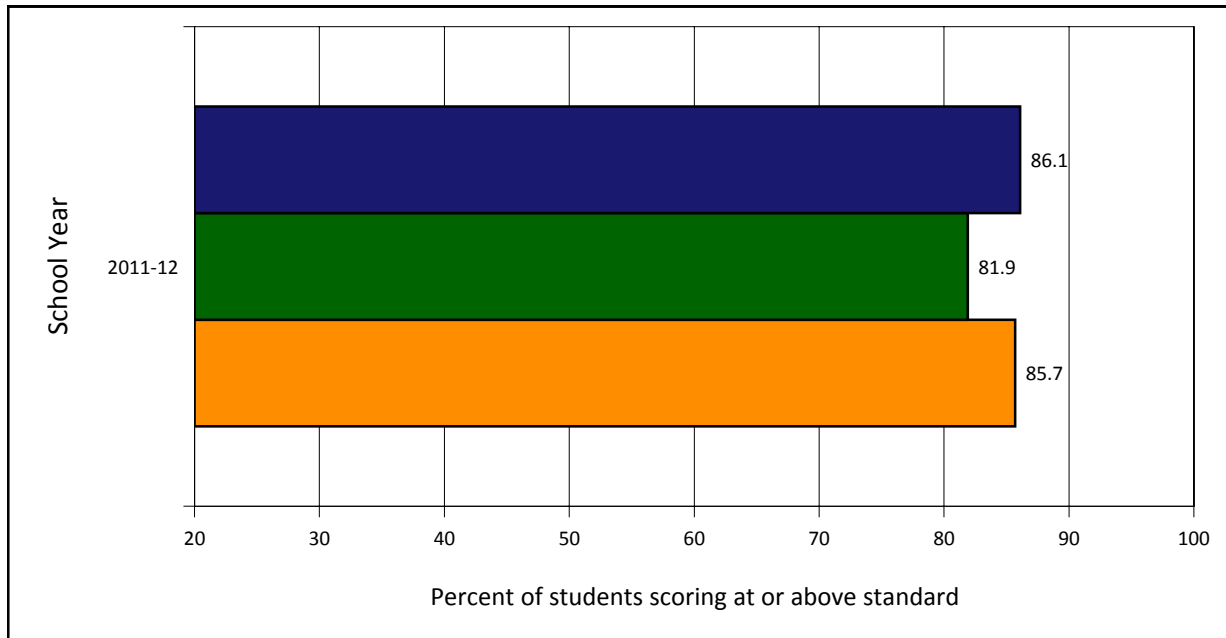
DISSAGGREGATED GROUP: Hispanic Students

District Disagg Group █ District ALL Students █ State Disagg Group █



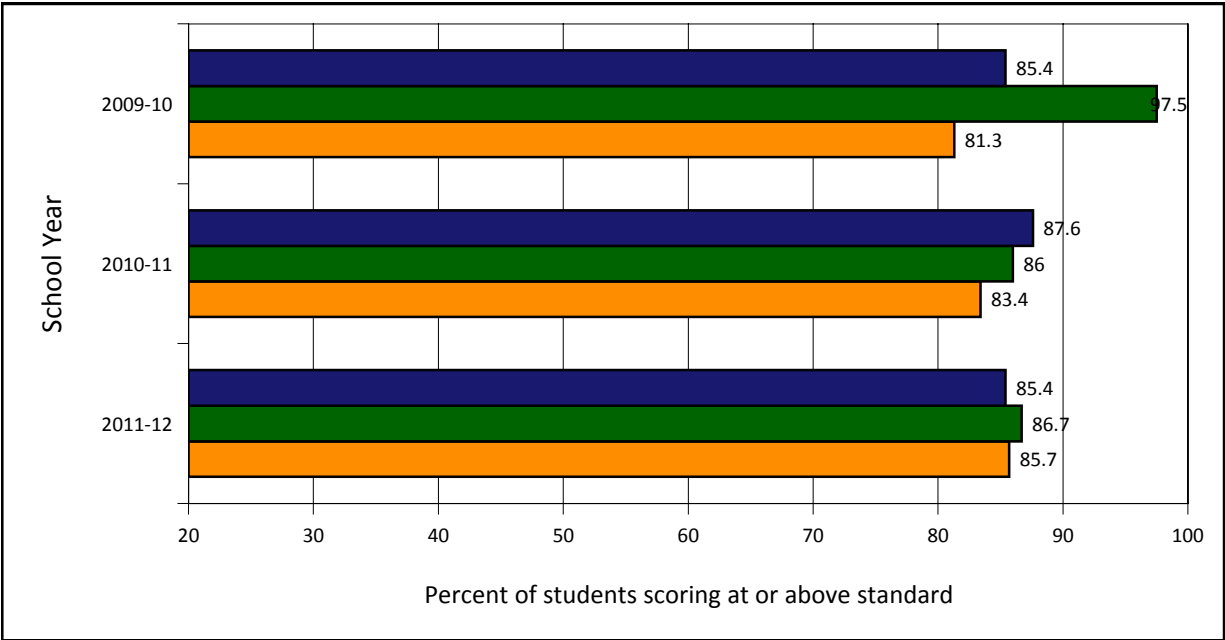
DISSAGGREGATED GROUP: Asian Students

District Disagg Group █ District ALL Students █ State Disagg Group █



DISSAGGREGATED GROUP: Multi-Racial & Undeclared Students

District Disagg Group District ALL Students State Disagg Group



NOTE: Groups of less than 10 students are not publicly reported.

District Mathematics Assessments

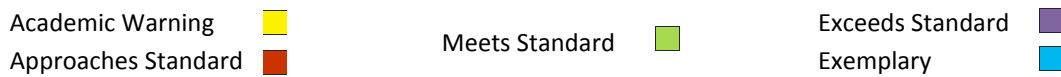
MATH PERFORMANCE GOALS BY YEAR:

In order to meet the requirements of adequate yearly progress, every student group must meet or exceed annual targets in reading while maintaining a participation rate of 95% or more. The chart below details the trend of "All students" meeting or exceeding standards for the past five years by grade.

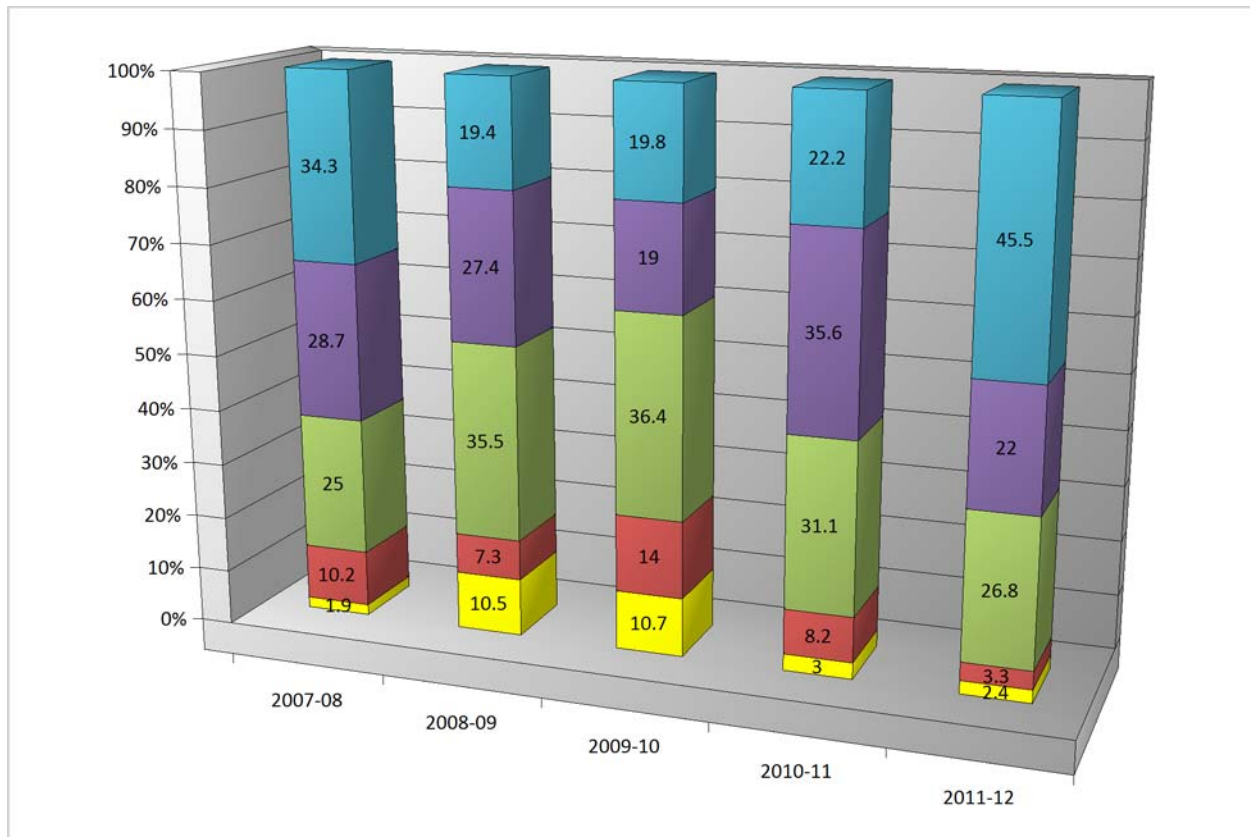
	3rd	4th	5th	6th	7th	8th	HS
2007-08	88	85.1	86.5	73.8	78.3	55.7	68.6
2008-09	82.3	75.2	81.3	83.3	80.8	71.7	78
2009-10	75.2	73.6	75	83.6	78	72.8	82.5
2010-11	88.9	63	83.1	92	91.7	92.2	76
2011-12	94.3	80.3	78.7	93.9	90.8	99.1	78.9

MATH SCORES BY GRADE:

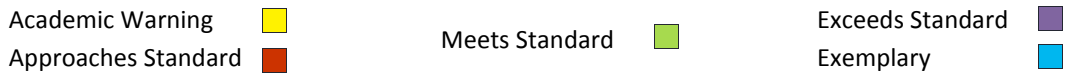
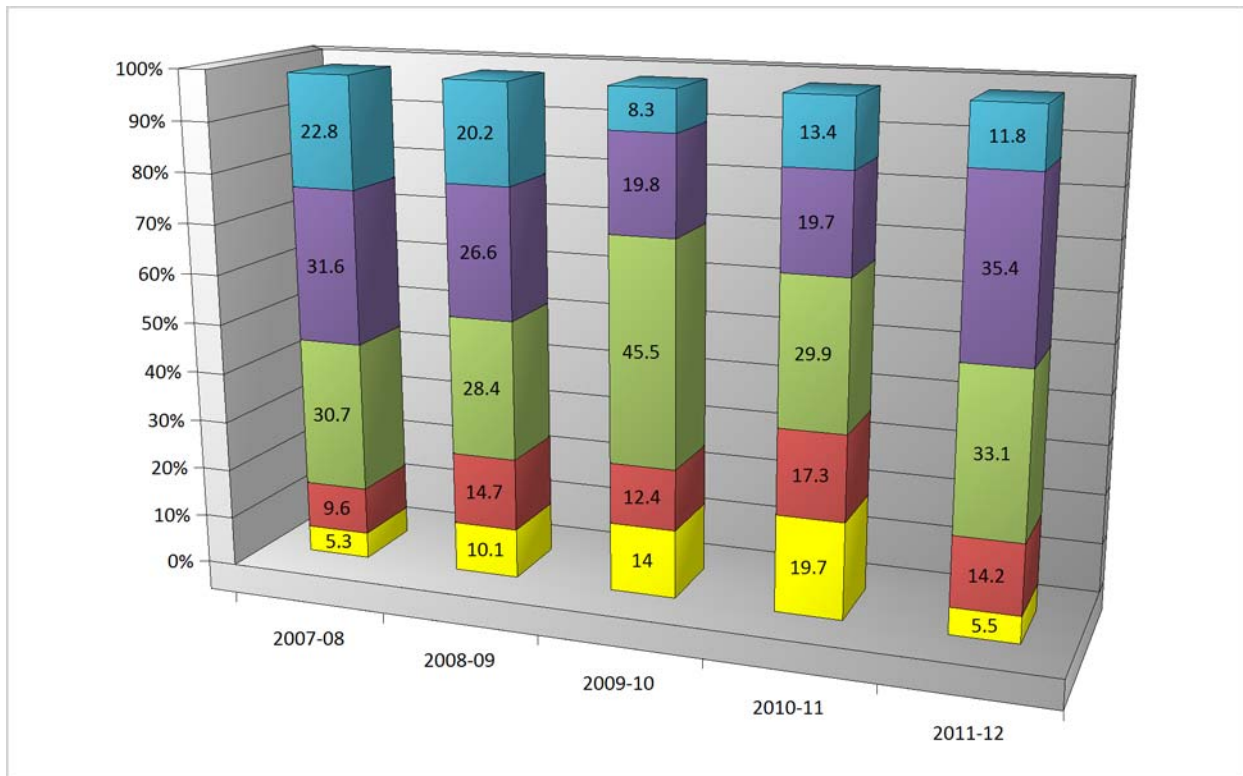
The following graphs show the change in percentage scoring within each of the following ranges for each of the past years indicated.



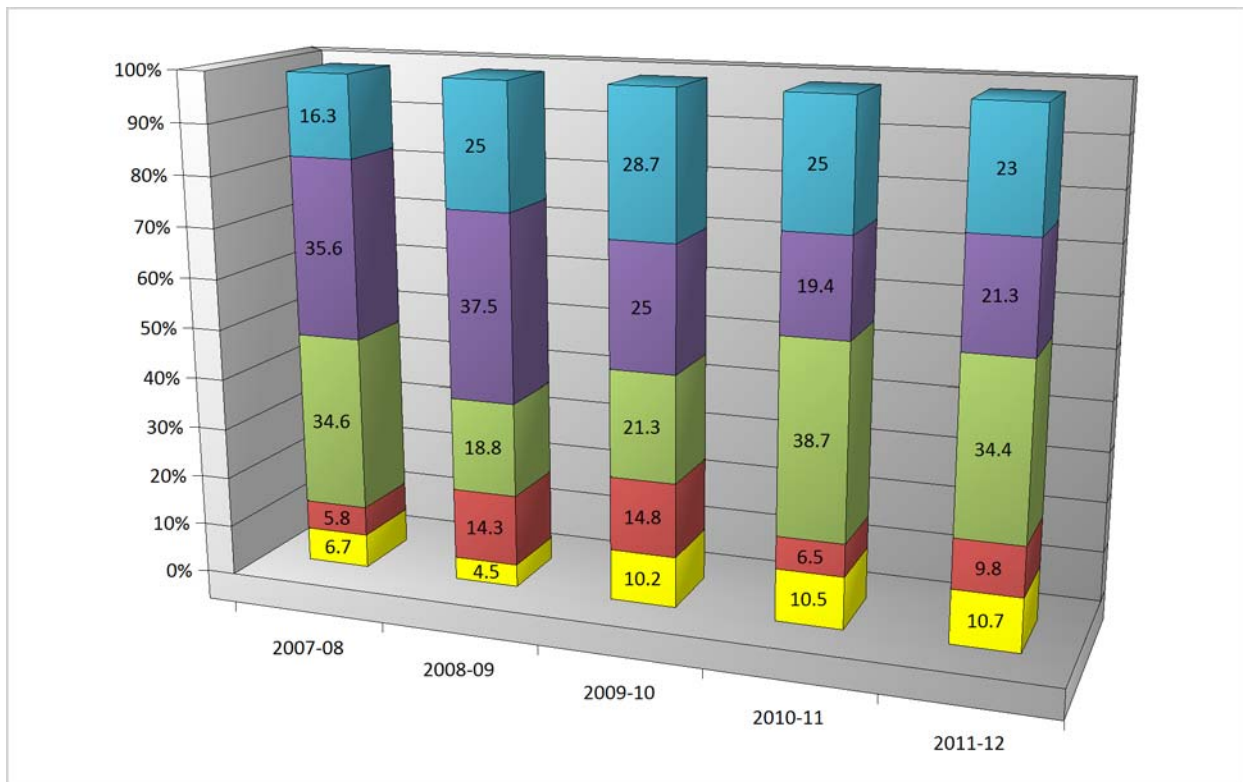
3rd Grade Math:



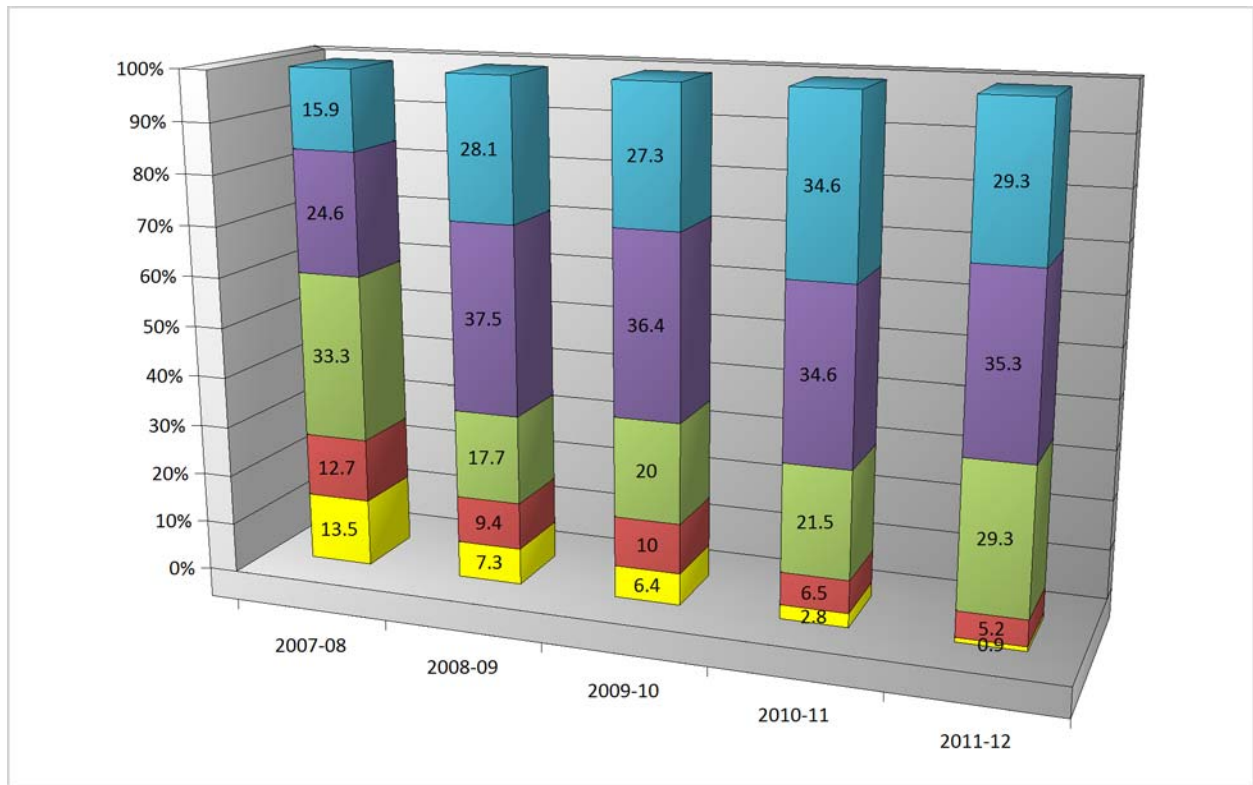
4th Grade Math



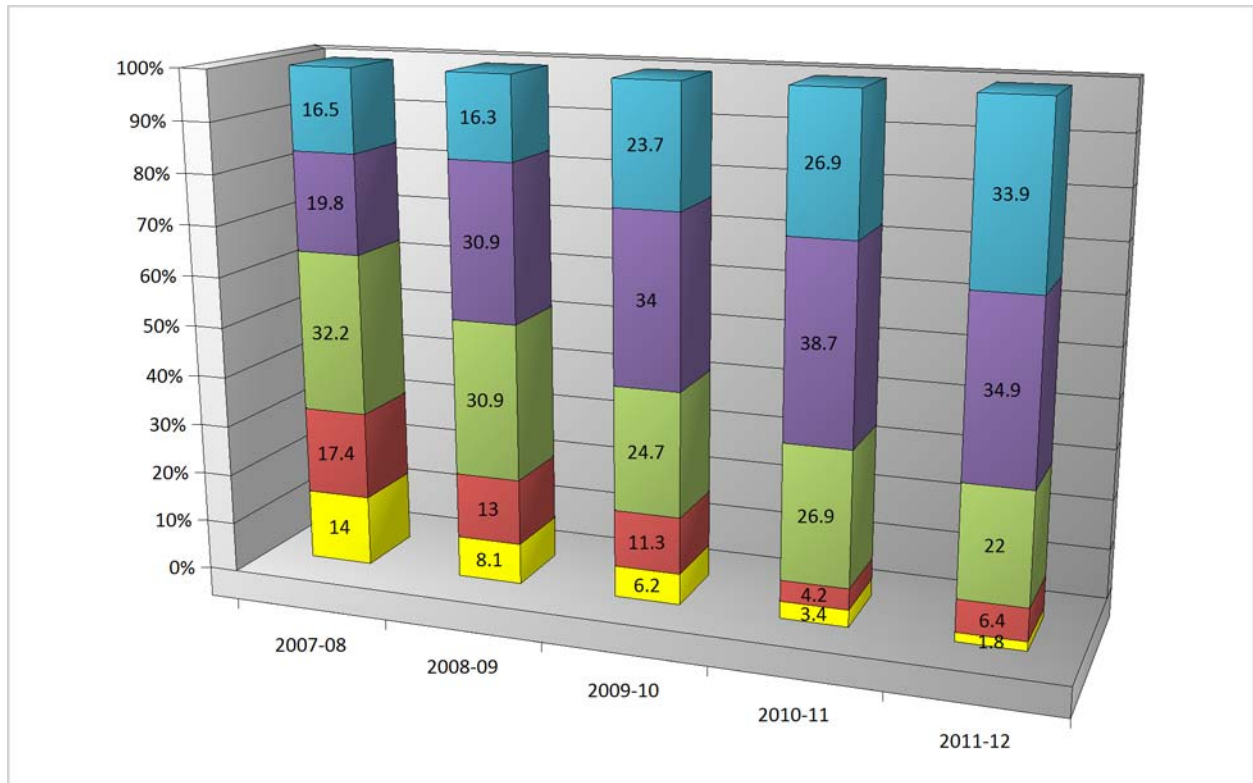
5th Grade Math:



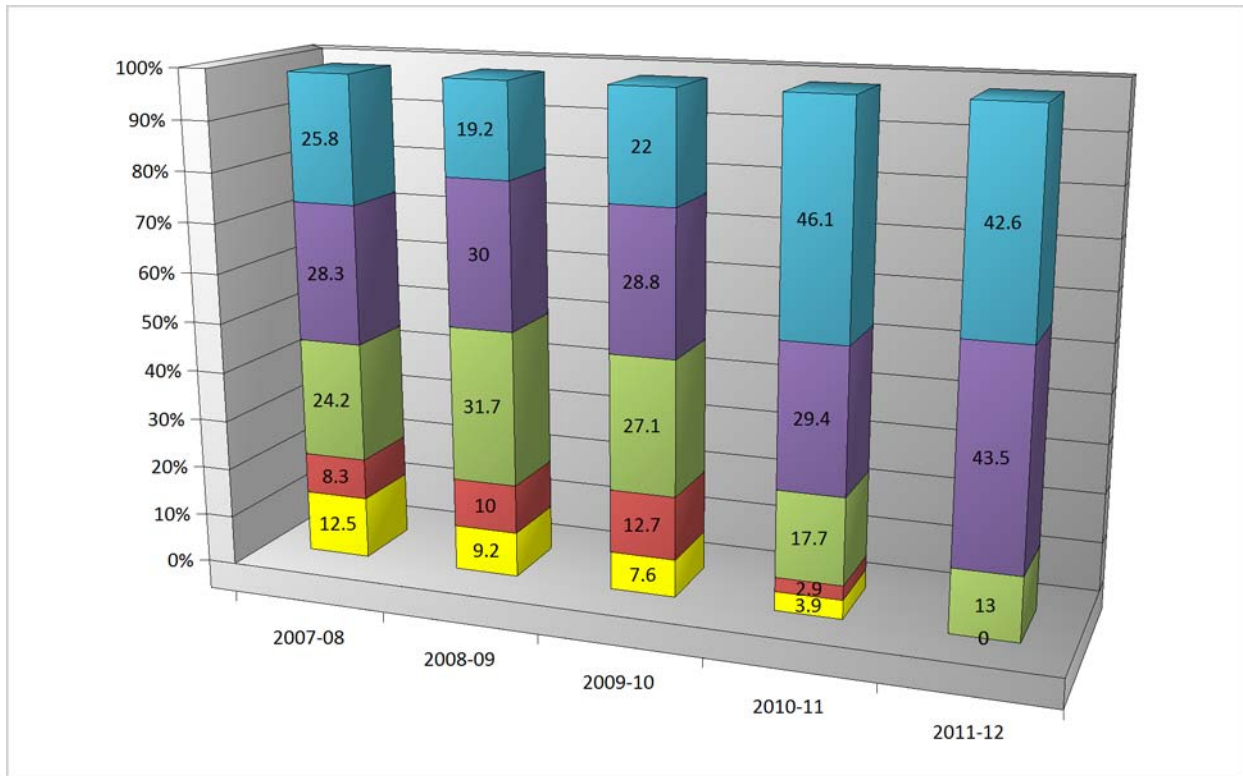
6th Grade Math:



7th Grade Math:

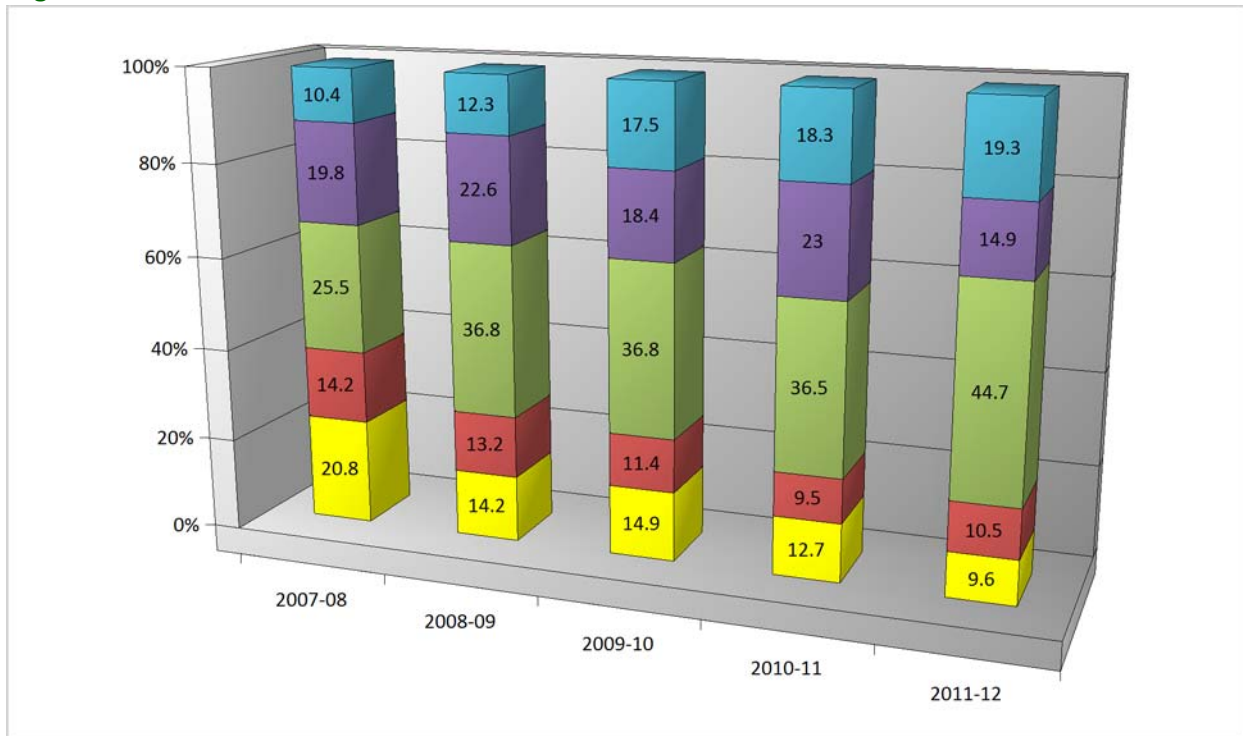


8th Grade Math:



Academic Warning ■ Meets Standard ■ Exceeds Standard ■
 Approaches Standard ■ Exemplary ■

High School Math:

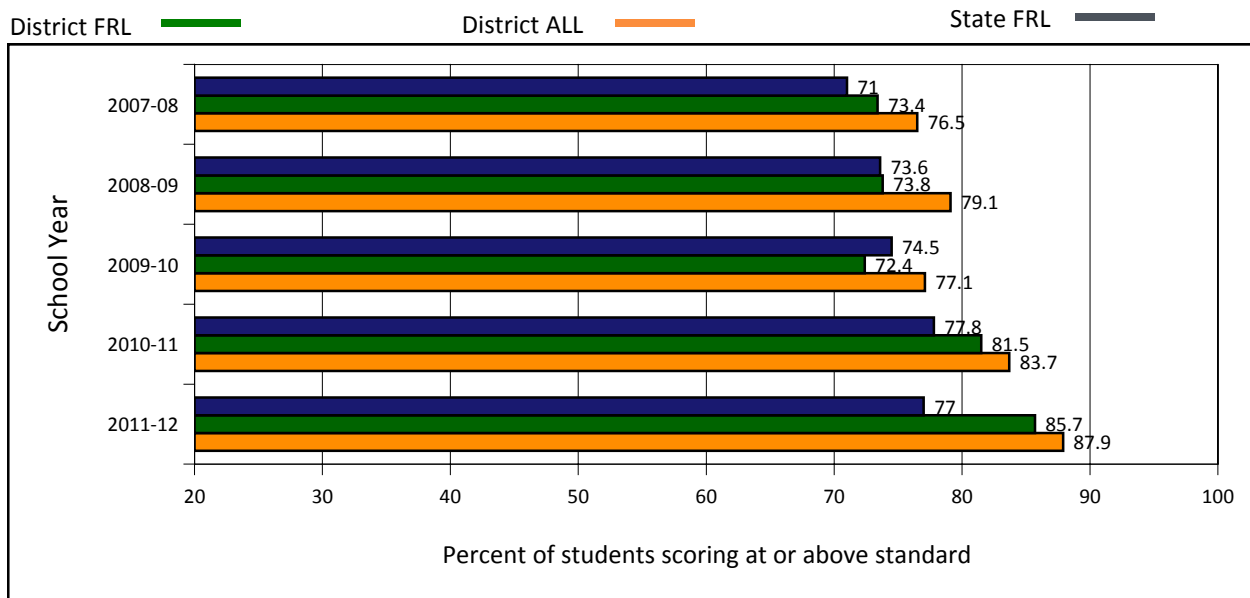


Mathematics Scores - Disaggregated Groups

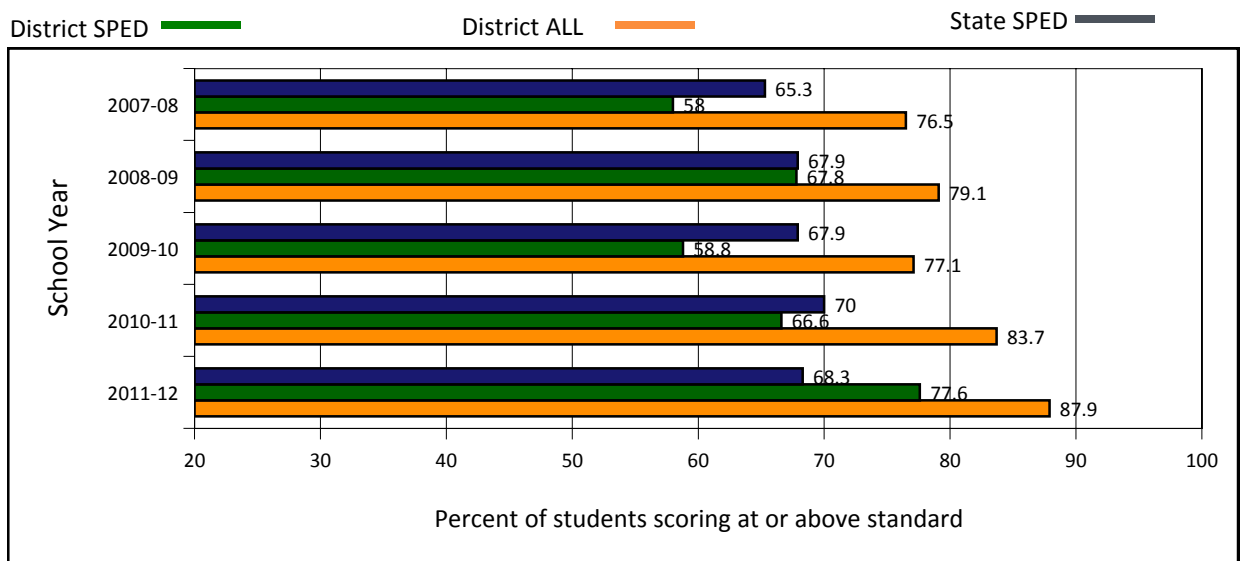
Traditionally, students who receive free or reduced lunch or special education support score at lower levels on state assessments than those who are not eligible for these special services. The graphs below compare those scoring at or above standard who are receiving additional support to the "All Students" category as data only for those not receiving services is not available. (Source: Special Request KSDE - USD Assess by Grade / Group)

NOTE: The assessment results presented include ALL STUDENTS TESTED with the regular / non-modified assessment only, not just those students enrolled on or before September 20. Slight differences between percentages reported for AYP are to be expected as the AYP calculation, as well as the Standard of Excellence calculation, is based upon the results of those students who were enrolled by September 20.

ECONOMICALLY DISADVANTAGED STUDENTS:



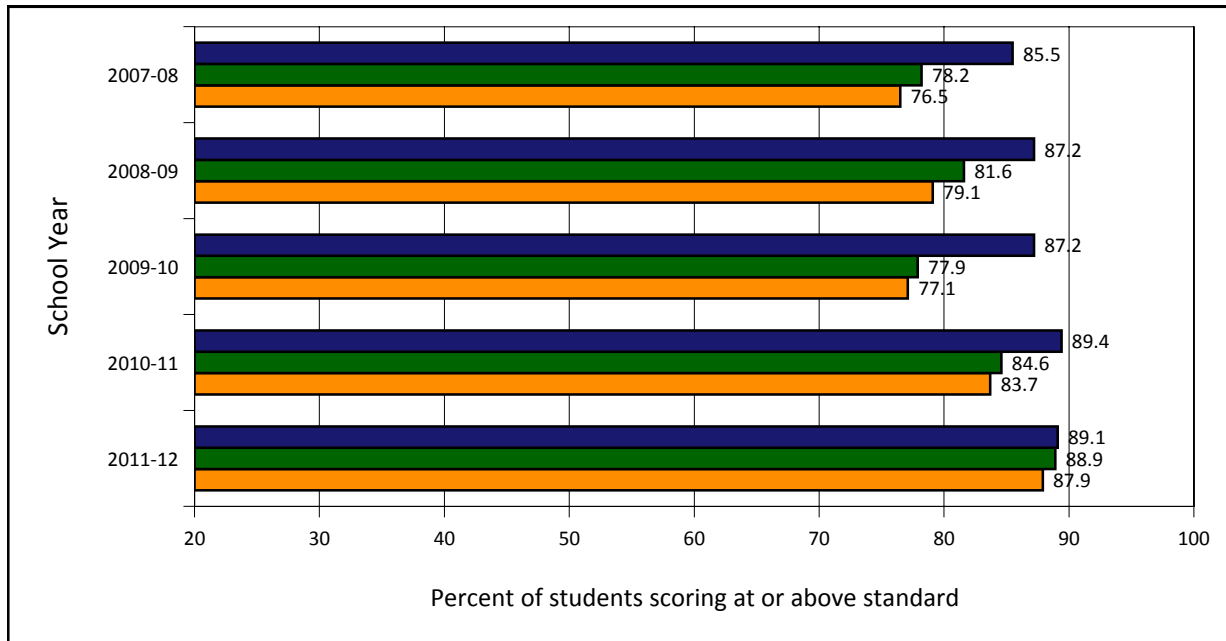
STUDENTS WITH DISABILITIES:



NOTE: Groups of less than 10 students are not publicly reported.

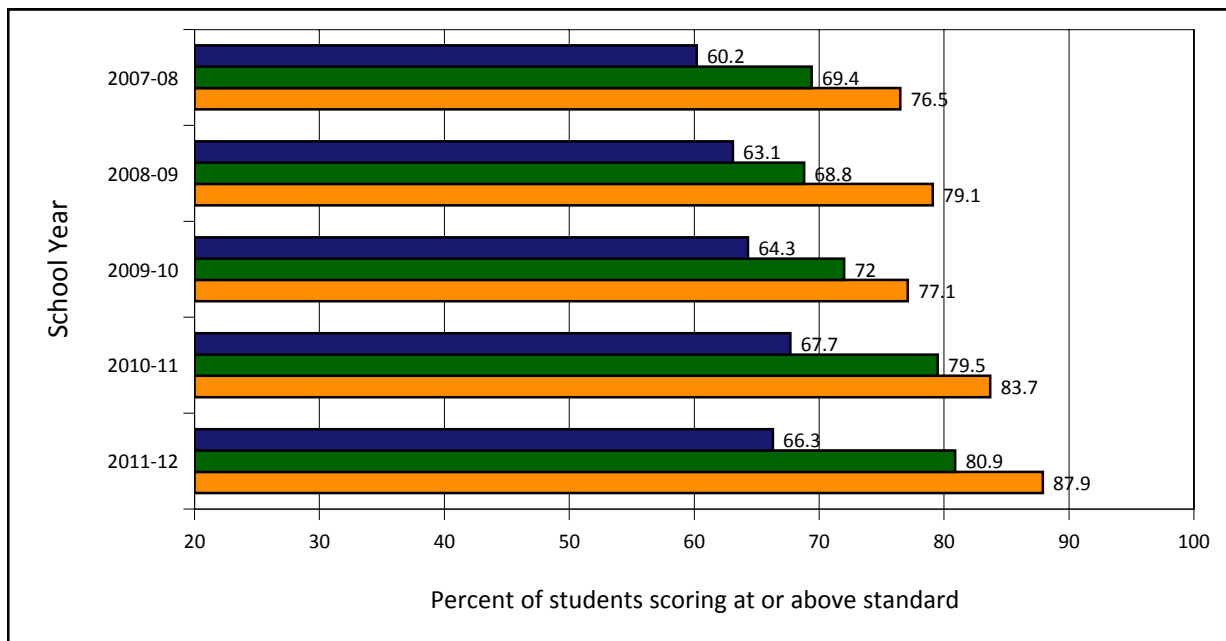
DISSAGGREGATED GROUP: White Students

District Disagg Group █ District ALL Students █ State Disagg Group █



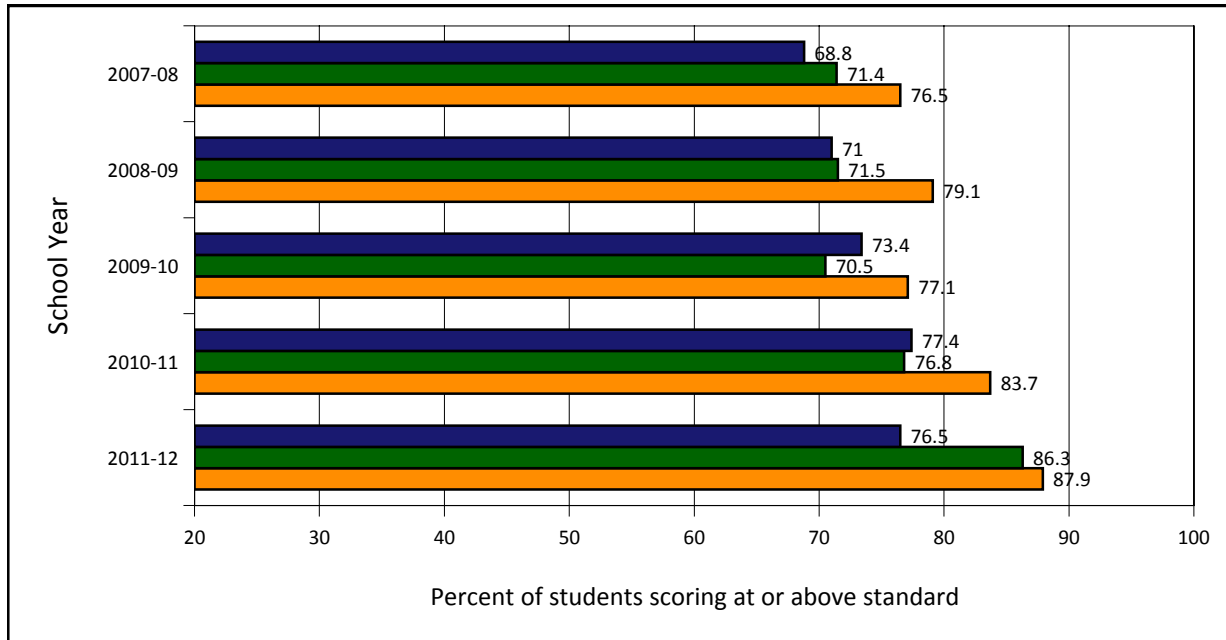
DISSAGGREGATED GROUP: African-Americans Students

District Disagg Group █ District ALL Students █ State Disagg Group █



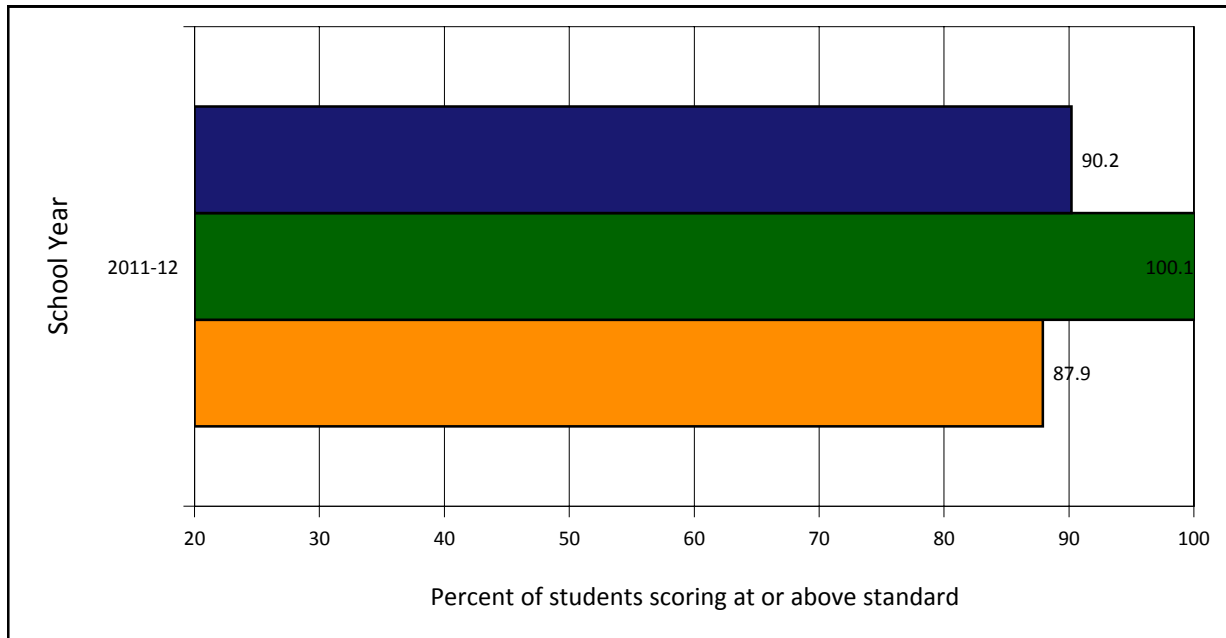
DISSAGGREGATED GROUP: Hispanic Students

District Disagg Group  District ALL Students  State Disagg Group 



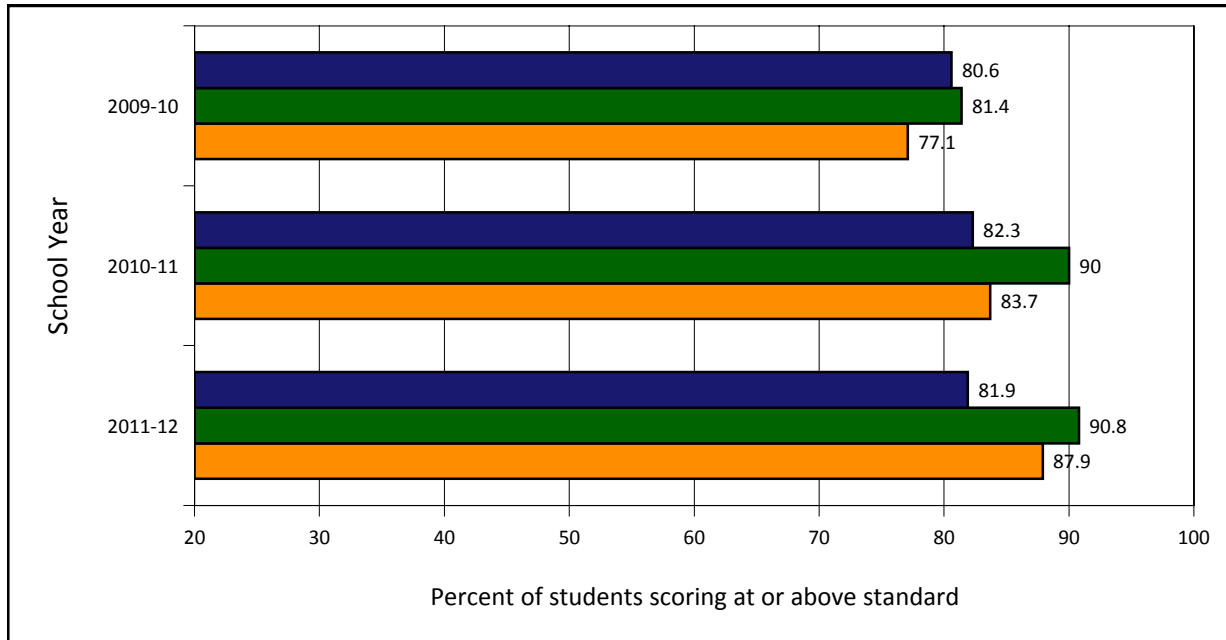
DISSAGGREGATED GROUP: Asian Students

District Disagg Group  District ALL Students  State Disagg Group 



DISSAGGREGATED GROUP: Multi-Racial & Undeclared Students

District Disagg Group District ALL Students State Disagg Group



NOTE: Groups of less than 10 students are not publicly reported.

District Science Assessments

The Kansas science assessment is administered annually to students in 4th, 7th, and 10th or 11th grades. Although NCLB requires an annual science assessment, to date does not include scores or participation rates in AYP. Scores and participation rates are used for quality performance accreditation (QPA) purposes only.

Targets are the percentage of students scoring at Meets Standard and above. QPA targets remain constant and do not change over time and are currently as shown below:

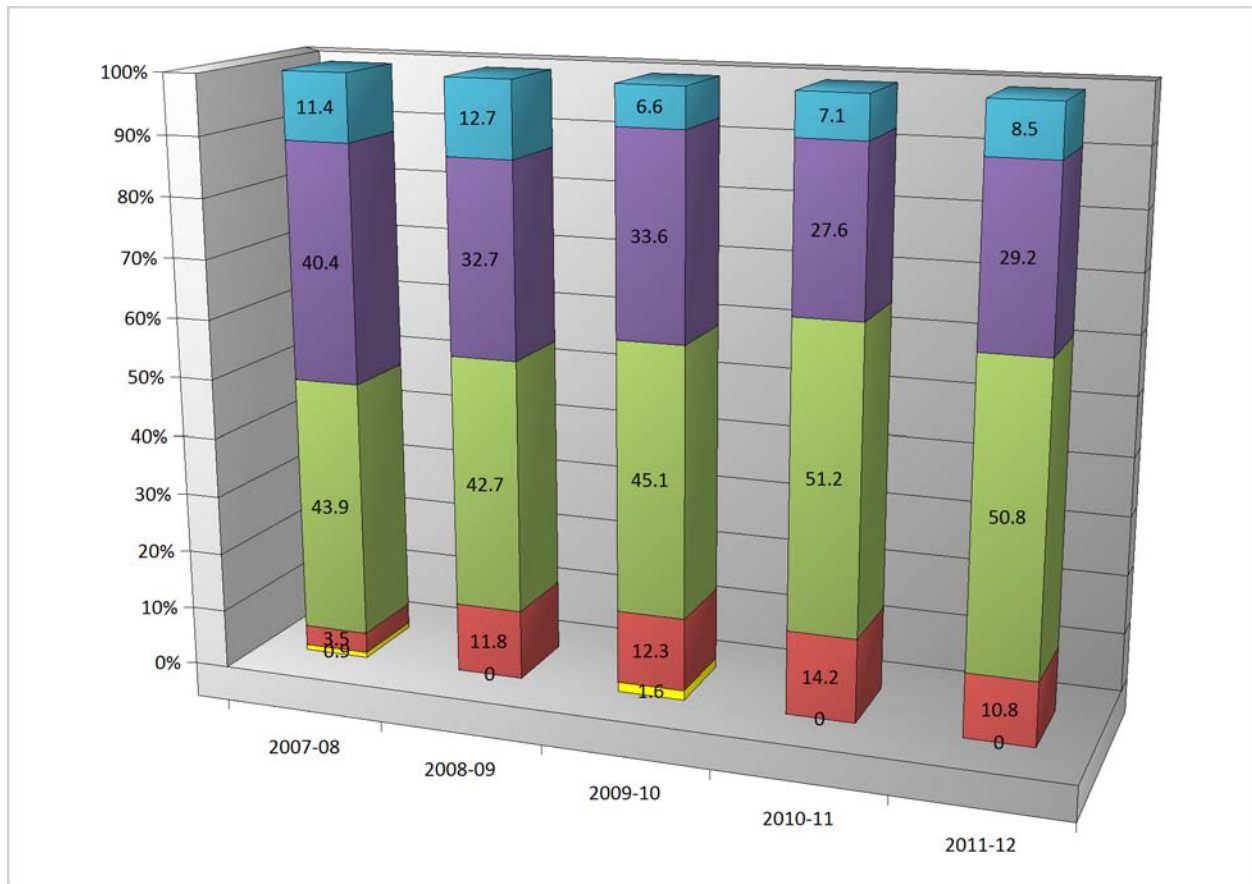
School Year	4th Grade	7th Grade	High School Students
	73%	71%	69%
2007-08	96.0	79.0	65.0
2008-09	88.0	78.0	79.0
2009-10	85.0	84.0	76.0
2010-11	86.0	84.0	78.0
2011-12	88.5	87.2	78.0

SCIENCE SCORES BY GRADE:

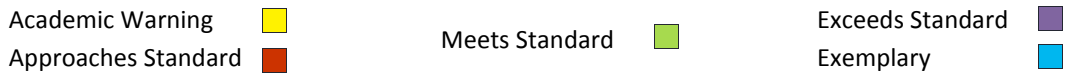
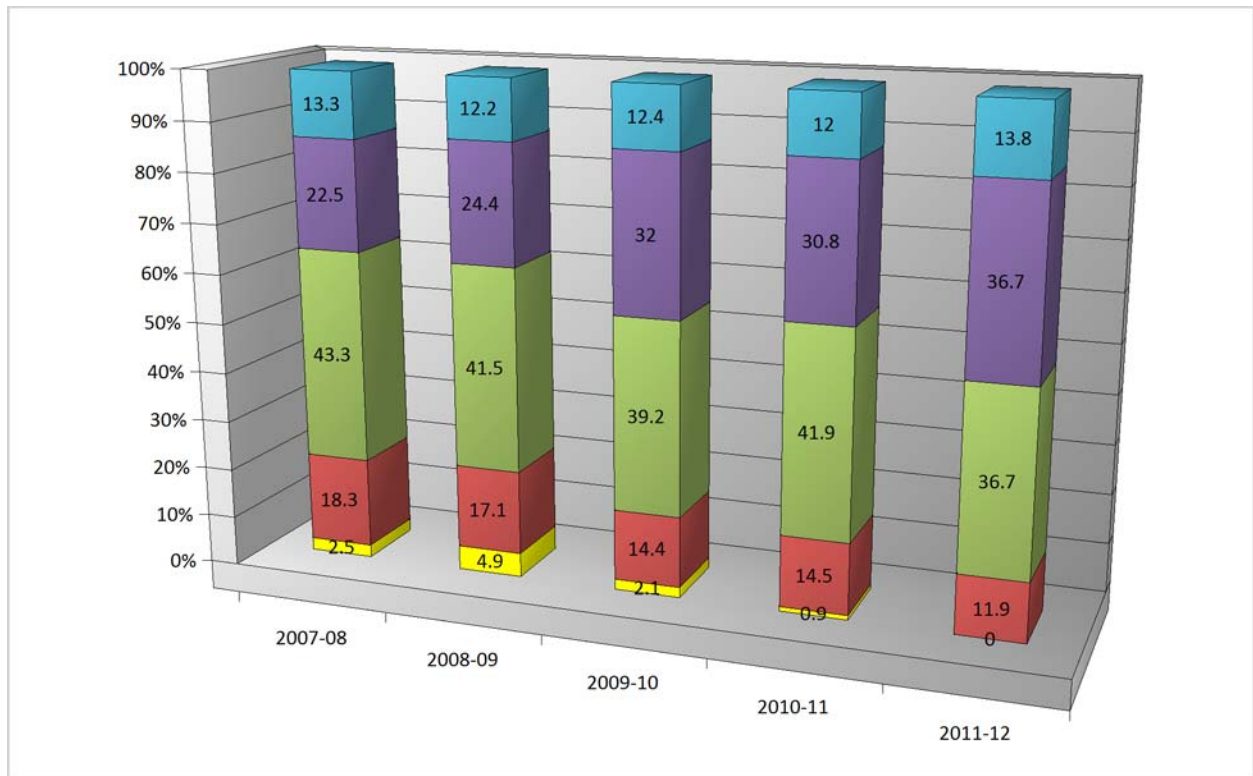
The following graphs show the change in percentage scoring within each of the following ranges for each of the past years indicated.



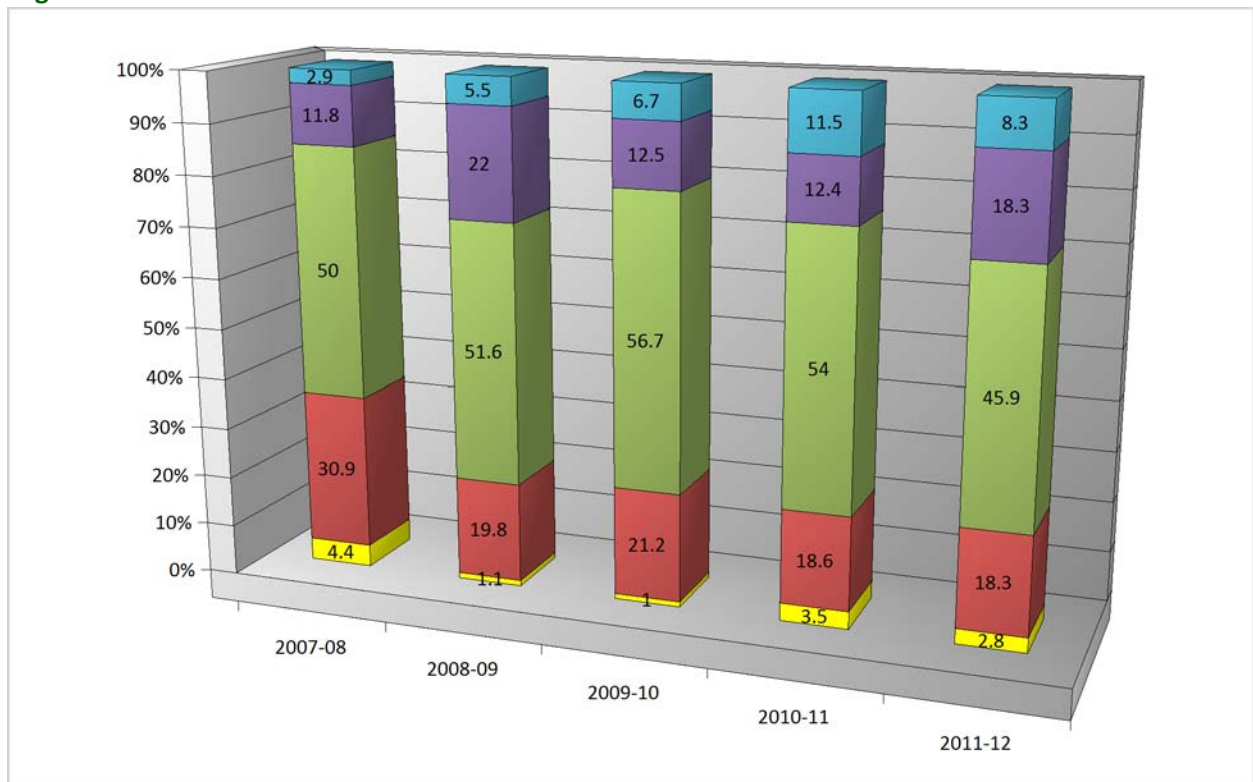
4th Grade Science:



7th Grade Science



High School Science:

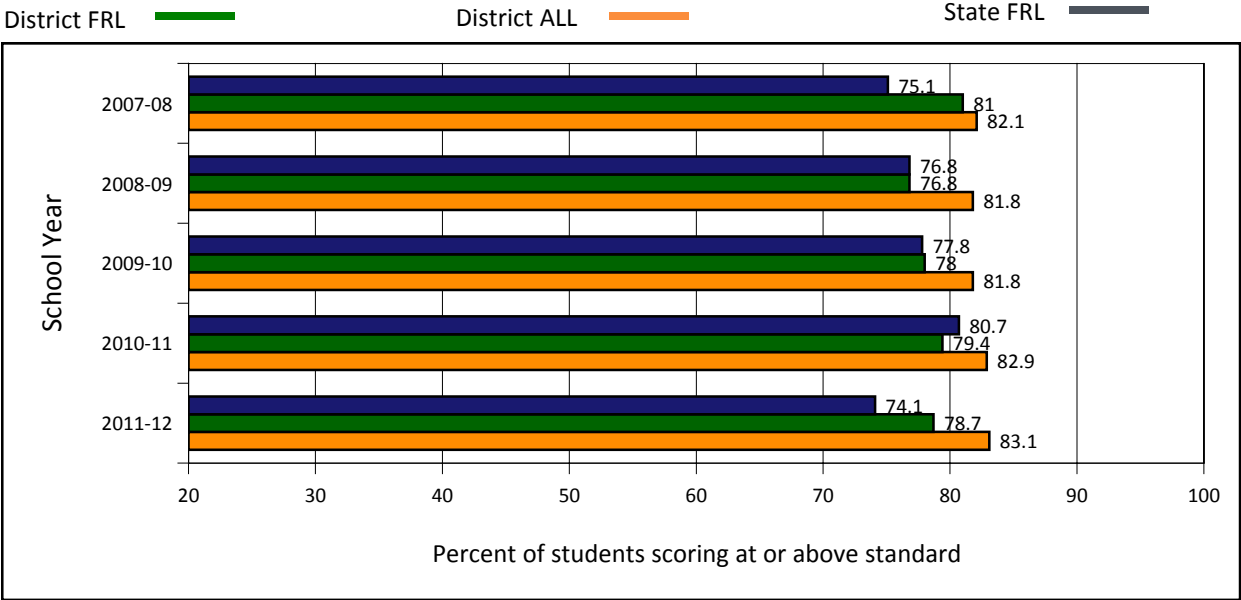


Science Scores - Disaggregated Groups

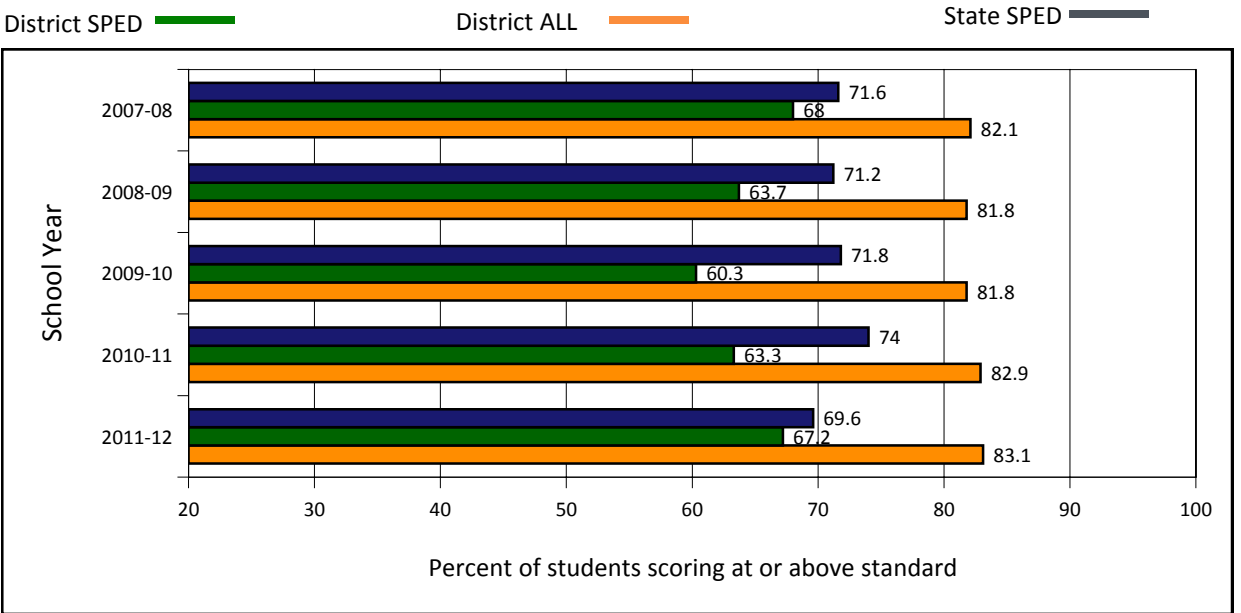
Traditionally, students who receive free or reduced lunch or special education support score at lower levels on state assessments than those who are not eligible for these special services. The graphs below compare those scoring at or above standard who are receiving additional support to the "All Students" category as data only for those not receiving services is not available. (Source: Special Request KSDE - USD Assess by Grade / Group)

NOTE: The assessment results presented include ALL STUDENTS TESTED with the regular / non-modified assessment only, not just those students enrolled on or before September 20. Slight differences between percentages reported for AYP are to be expected as the AYP calculation, as well as the Standard of Excellence calculation, is based upon the results of those students who were enrolled by September 20.

ECONOMICALLY DISADVANTAGED STUDENTS:

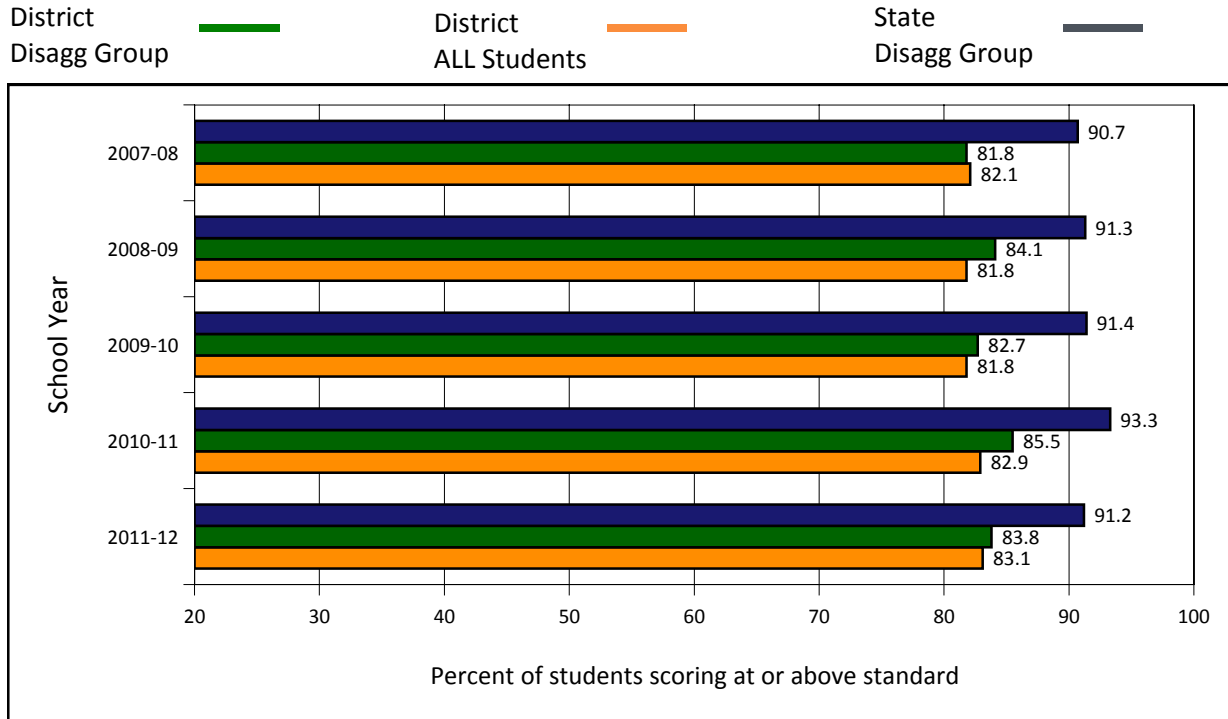


STUDENTS WITH DISABILITIES:

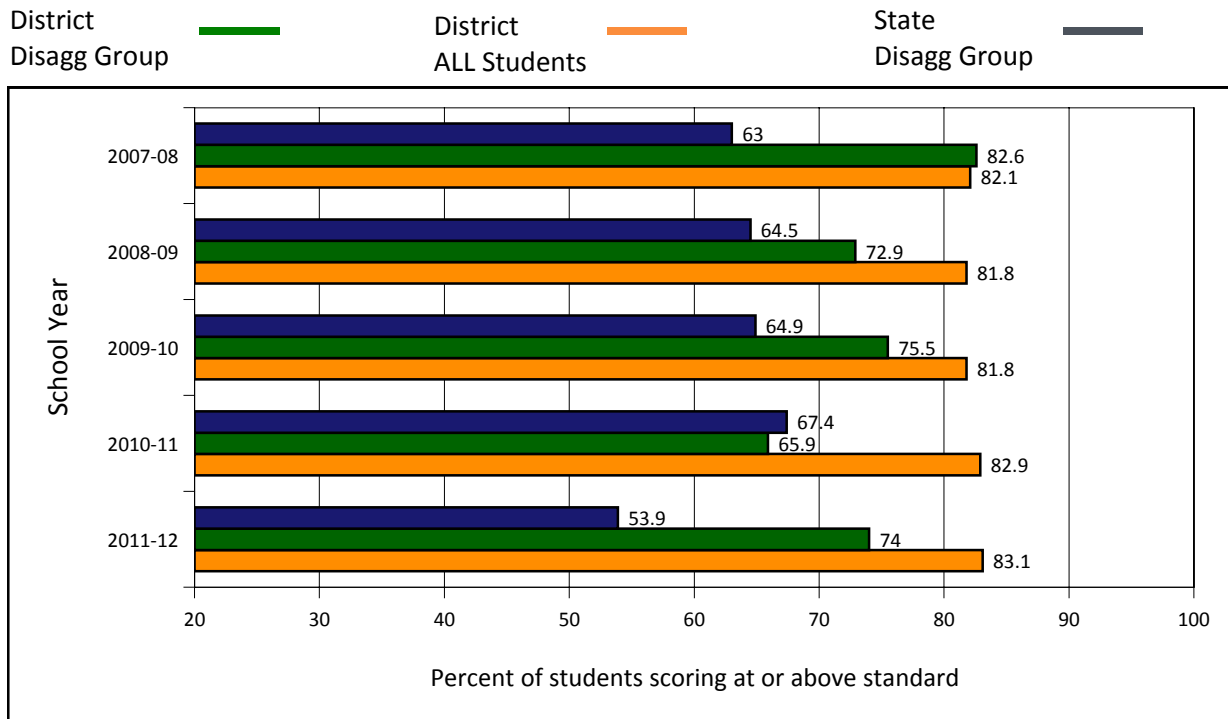


NOTE: Groups of less than 10 students are not publicly reported.

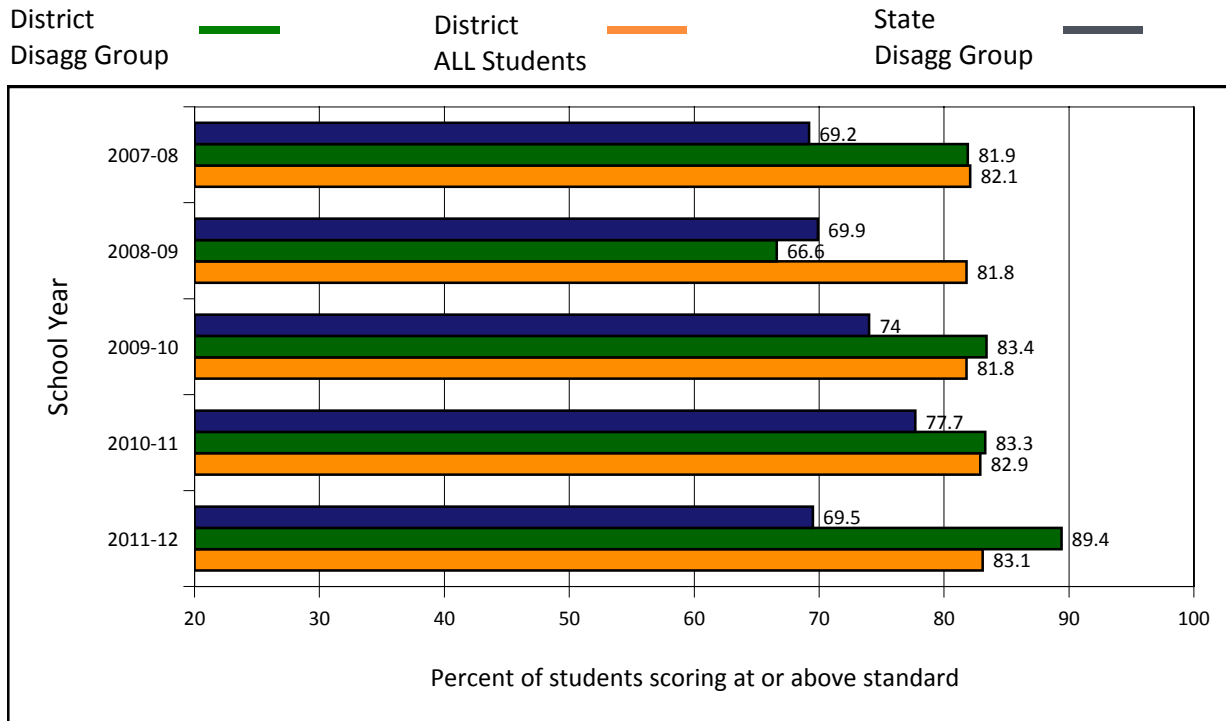
DISSAGGREGATED GROUP: White Students



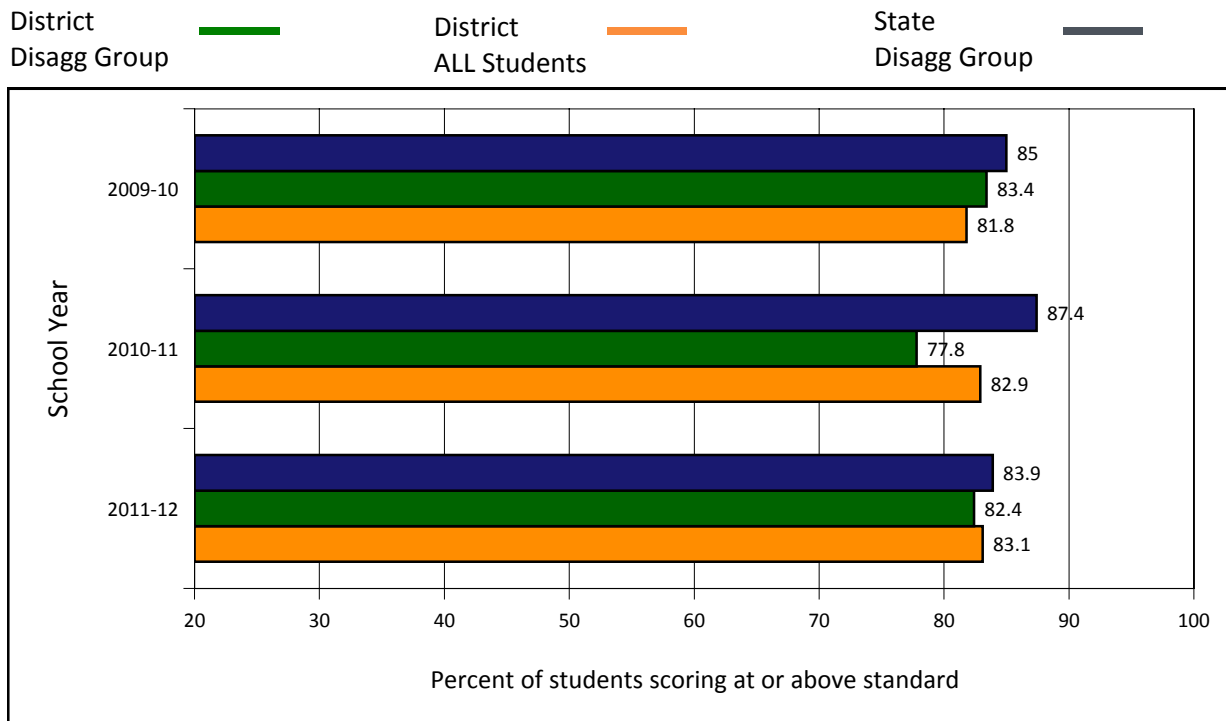
DISSAGGREGATED GROUP: African-Americans Students



DISSAGGREGATED GROUP: Hispanic Students



DISSAGGREGATED GROUP: Multi-Racial & Undeclared Students



NOTE: Groups of less than 10 students are not publicly reported.